



European Aquaculture Production Report 2007-2015

Prepared by the FEAP secretariat (October 2016)

contact: FEAP Secretariat - secretariat@feap.info

The Member Associations of the FEAP provide production data for the activities of their national producers on an annual basis. In addition, if available, forecasts for the coming year are also provided, based on their own individual reporting systems. The FEAP Secretariat groups this information into European and National reports on production for publication in this document. The information and figures used for the preparation of this report have been provided, for the most part, by the Member Associations of the FEAP while additional data has been sourced from National statistical offices and/or other national sources.

For further statistical information on aquaculture production and values, the FAO provides a wide range of data for global aquaculture and fisheries statistics (FISHSTAT) while Globefish, another initiative of the FAO, represents a network of regional marketing information services that provides data on markets and prices. European trade data can be accessed through EUMOFA - the European Market Observatory for Fisheries and Aquaculture Products (see www.eumofa.eu) and EUROSTAT.

This FEAP Production report is split up in 3 sections, PRODUCTION **BY REGION** (pp. 2-6), **BY COUNTRY** (pp. 7-28) and **BY SPECIES** (pp. 30-45), covering the period **2007-2015**:

1. Production by Region

- Total European production (including EU and non EU countries)
- EU Member State production (where available)
- Non-EU European State production

2. Production by Country, covering

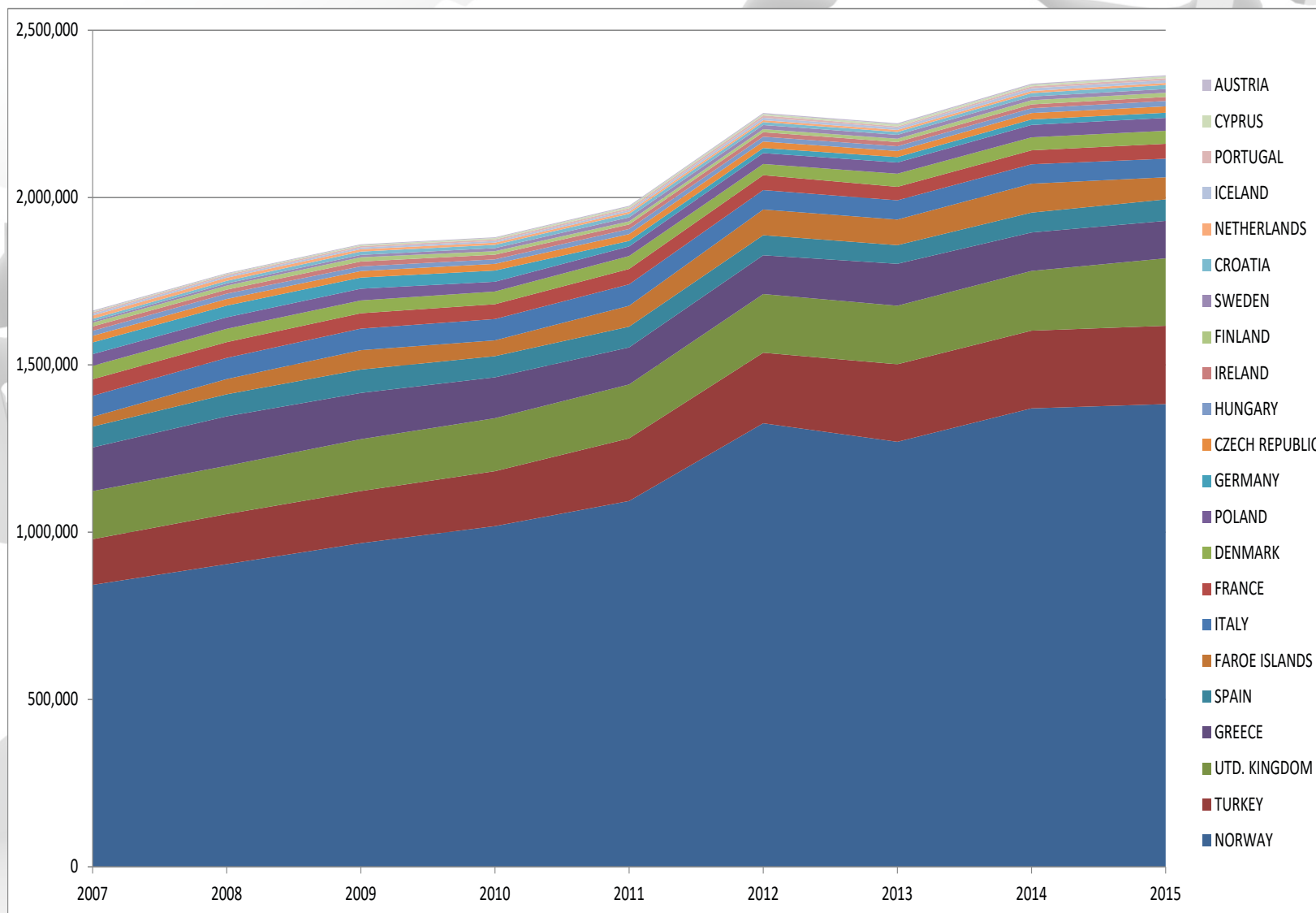
Austria	Iceland
Croatia	Ireland
Cyprus	Italy
Czech Republic	Netherlands
Denmark	Norway
Faroe Islands	Poland
Finland	Portugal
France	Spain
Germany	Sweden
Greece	Turkey
Hungary	United Kingdom

- Countries with a total production <1000 tons have not been included
- Figures in red indicate that updated data are not yet available and figures identical to previous year(s) have been included so as to provide estimates.

FISH FARMING PRODUCTION IN EUROPE

PRODUCTION (tons) YEAR										
COUNTRY	2007	2008	2009	2010	2011	2012	2013	2014	2015	
NORWAY	842.521	904.623	967.235	1.018.201	1.093.300	1.325.550	1.270.150	1.370.090	1.382.800	
TURKEY	136.573	149.589	155.802	164.197	187.136	210.824	231.672	232.152	234.000	
UTD. KINGDOM	143.721	144.031	154.949	158.268	161.033	175.292	174.897	178.417	201.578	
GREECE	130.872	148.509	138.513	122.590	111.217	116.073	125.580	115.200	112.159	
FAROE ISLANDS	29.183	45.506	57.900	47.190	62.400	76.800	76.480	86.449	66.090	
SPAIN	62.293	65.835	69.866	63.200	61.992	59.920	55.694	59.356	64.186	
ITALY	63.815	64.073	65.137	64.382	64.781	58.100	57.590	57.990	55.480	
FRANCE	49.491	47.110	45.954	44.342	45.980	44.540	40.205	41.641	44.595	
DENMARK	40.068	39.831	38.216	37.904	38.548	33.447	39.176	38.829	38.829	
POLAND	34.898	34.370	35.048	29.250	28.745	32.524	33.535	37.070	38.590	
CZECH REPUBLIC	19.794	19.765	19.464	19.953	20.393	19.407	18.201	19.092	19.113	
GERMANY	35.038	34.964	33.356	33.453	16.464	15.155	16.150	16.449	15.341	
HUNGARY	14.942	15.860	13.976	13.524	15.297	14.433	14.251	14.378	16.124	
FINLAND	11.000	12.000	12.700	10.400	9.220	9.000	9.954	12.448	12.500	
IRELAND	13.060	12.020	14.500	13.934	13.434	13.434	12.450	11.400	12.000	
SWEDEN	4.956	6.703	7.023	9.171	11.963	12.441	11.657	11.144	11.144	
CROATIA	6.913	7.635	9.946	9.823	10.681	8.822	8.512	10.201	12.093	
ICELAND	5.588	5.014	5.116	5.018	5.260	7.368	6.886	8.289	8.249	
NETHERLANDS	9.640	9.340	7.095	6.560	6.110	5.560	6.155	6.155	6.155	
PORTUGAL	4.274	4.024	4.097	4.674	5.130	7.000	3.635	5.760	5.919	
CYPRUS	2.229	2.452	3.343	4.118	4.665	4.313	6.171	4.810	5.409	
AUSTRIA	2.669	2.206	2.260	2.279	2.813	3.001	3.115	3.121	3.121	
Grand Total	1.663.538	1.775.460	1.861.496	1.882.431	1.976.562	2.253.004	2.222.116	2.340.441	2.365.475	

FISH FARMING PRODUCTION IN EUROPE



FISH FARMING PRODUCTION IN THE EU

PRODUCTION (tons)	YEAR									
COUNTRY	2007	2008	2009	2010	2011	2012	2013	2014	2015	
UTD. KINGDOM	143,704	144,015	154,933	158,252	161,033	175,292	174,897	178,417	201,578	
GREECE	130,872	148,509	138,513	122,590	111,217	116,073	125,580	115,200	112,159	
SPAIN	62,293	65,835	69,866	63,200	61,992	59,920	55,694	59,356	64,186	
ITALY	63,792	64,054	65,120	64,365	64,781	58,100	57,590	57,990	55,480	
FRANCE	49,491	47,110	45,954	44,342	45,980	44,540	40,205	41,641	44,595	
DENMARK	40,115	39,886	38,322	38,009	38,653	33,552	39,281	38,934	38,829	
POLAND	34,898	34,370	35,048	29,250	28,745	32,524	33,535	37,070	38,590	
CZECH REPUBLIC	19,833	19,814	19,516	19,994	20,448	19,462	18,201	19,092	19,113	
GERMANY	35,041	34,967	33,359	33,456	16,467	15,155	16,150	16,449	15,341	
HUNGARY	14,974	15,892	14,016	13,562	15,343	14,477	14,251	14,378	16,124	
FINLAND	11,000	12,000	12,700	10,400	9,220	9,000	9,954	12,448	12,500	
IRELAND	13,060	12,020	14,500	13,934	13,434	13,434	12,450	11,400	12,000	
SWEDEN	4,956	6,703	7,023	9,171	11,963	12,441	11,657	11,144	11,144	
CROATIA	6,929	7,642	9,952	9,829	10,687	8,822	8,512	10,201	12,093	
NETHERLANDS	8,740	8,440	7,110	6,570	6,150	5,620	6,305	6,305	6,305	
PORTUGAL	4,274	4,024	4,097	4,674	5,130	7,000	3,635	5,760	5,919	
CYPRUS	2,229	2,452	3,343	4,118	4,665	4,313	6,171	4,810	5,409	
AUSTRIA	2,671	2,209	2,262	2,282	2,823	3,007	3,121	3,128	3,128	
Grand Total	648,872	669,942	675,634	647,998	628,731	632,732	637,189	643,723	674,493	

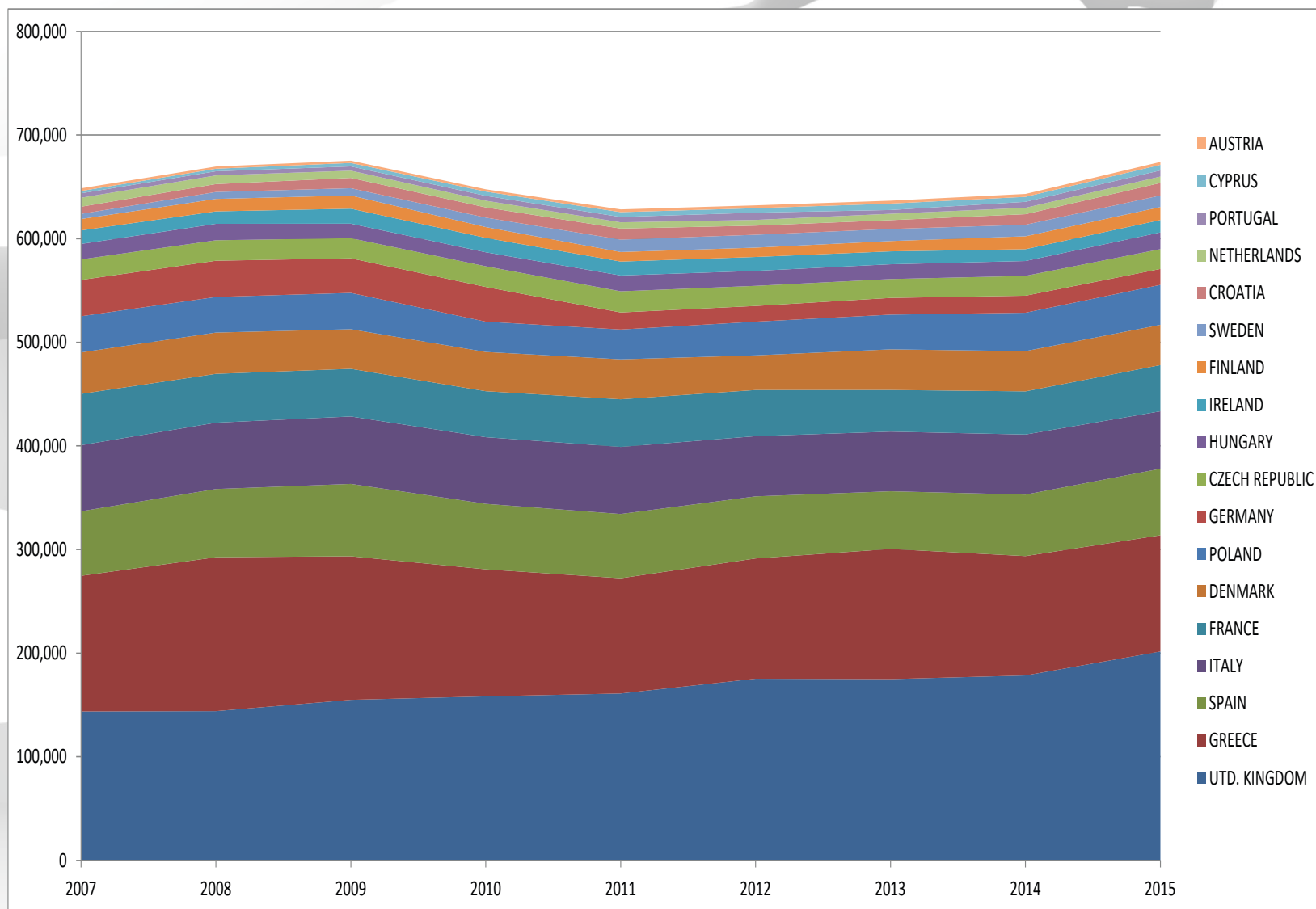
SOURCE: FEAP members & national statistics

NOTE: Countries with a production less than 1000T are not included

Malta is not included due to lack of availability of reliable data

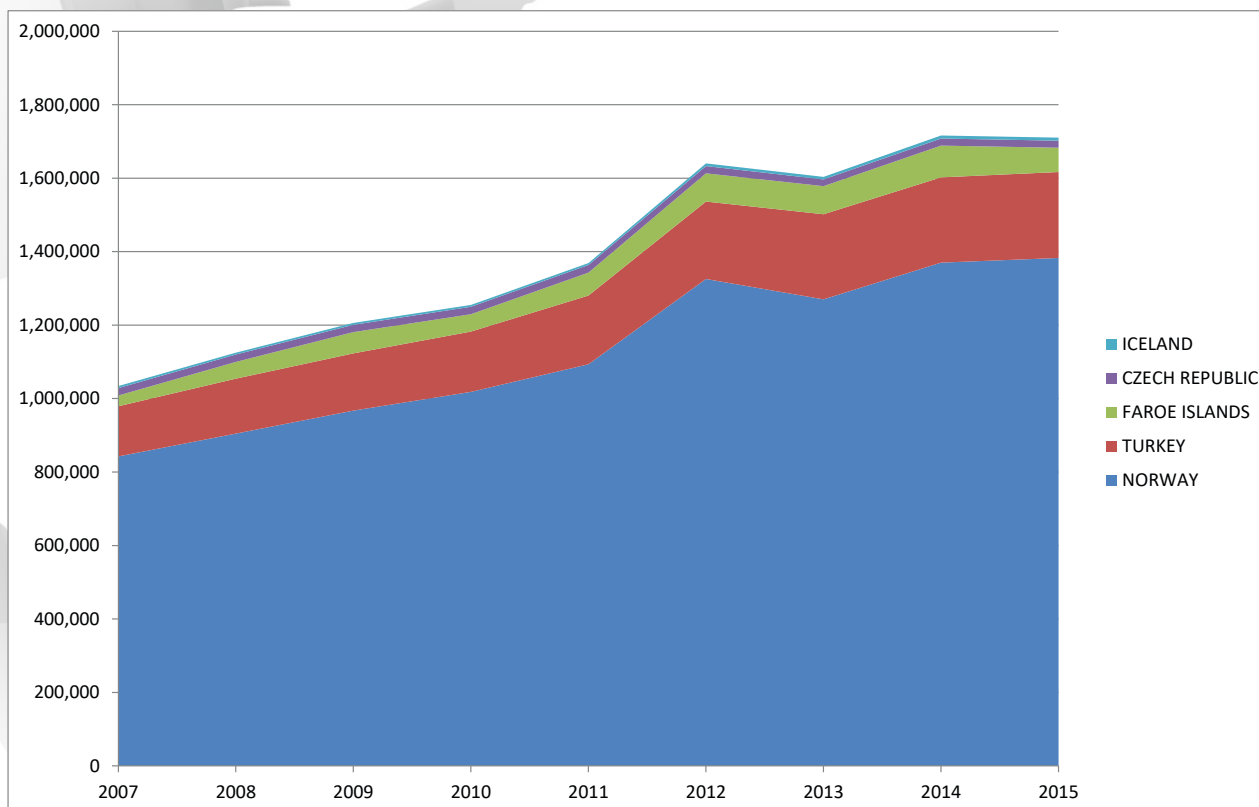
Tuna spp. and some minor freshwater species like (Northern) pike, (pike) perch, roach, tench are not included due to lack of reliable data

FISH FARMING PRODUCTION IN THE EU

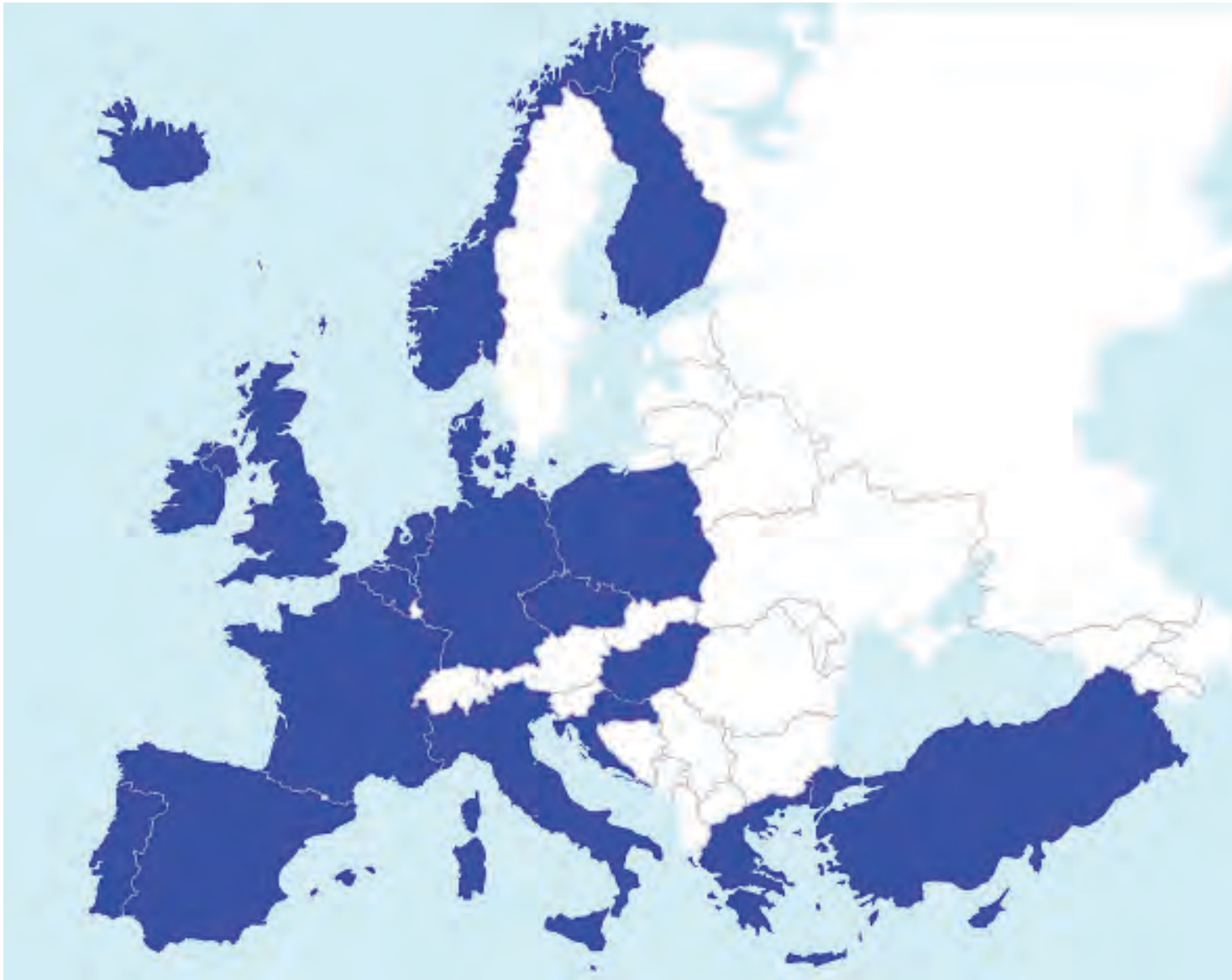


FISH FARMING PRODUCTION IN NON-EU EUROPE

PRODUCTION (tons)	YEAR									
COUNTRY	2007	2008	2009	2010	2011	2012	2013	2014	2015	
NORWAY	842,521	904,623	967,235	1,018,201	1,093,300	1,325,550	1,270,150	1,370,090	1,382,800	
TURKEY	136,573	149,589	155,802	164,197	187,136	210,824	231,672	232,152	234,000	
FAROE ISLANDS	29,183	45,506	57,900	47,190	62,400	76,800	76,480	86,449	66,090	
ICELAND	5,588	5,014	5,116	5,018	5,260	7,368	6,886	8,289	8,249	
Grand Total	1,013,865	1,104,732	1,186,053	1,234,606	1,348,096	1,620,542	1,585,188	1,696,980	1,691,139	



FISH FARMING PRODUCTION BY COUNTRY



Members Associations in 2016

- Belgium
- [Croatia](#)
- [Cyprus](#)
- [Czech Republic](#)
- [Denmark](#)
- [Faroe Islands](#)
- [Finland](#)
- [France](#)
- [Germany](#)
- [Greece](#)
- [Hungary](#)
- [Iceland](#)
- [Ireland](#)
- [Italy](#)
- [Netherlands](#)
- [Norway](#)
- [Poland](#)
- [Portugal](#)
- [Spain](#)
- [Turkey](#)
- [United Kingdom](#)



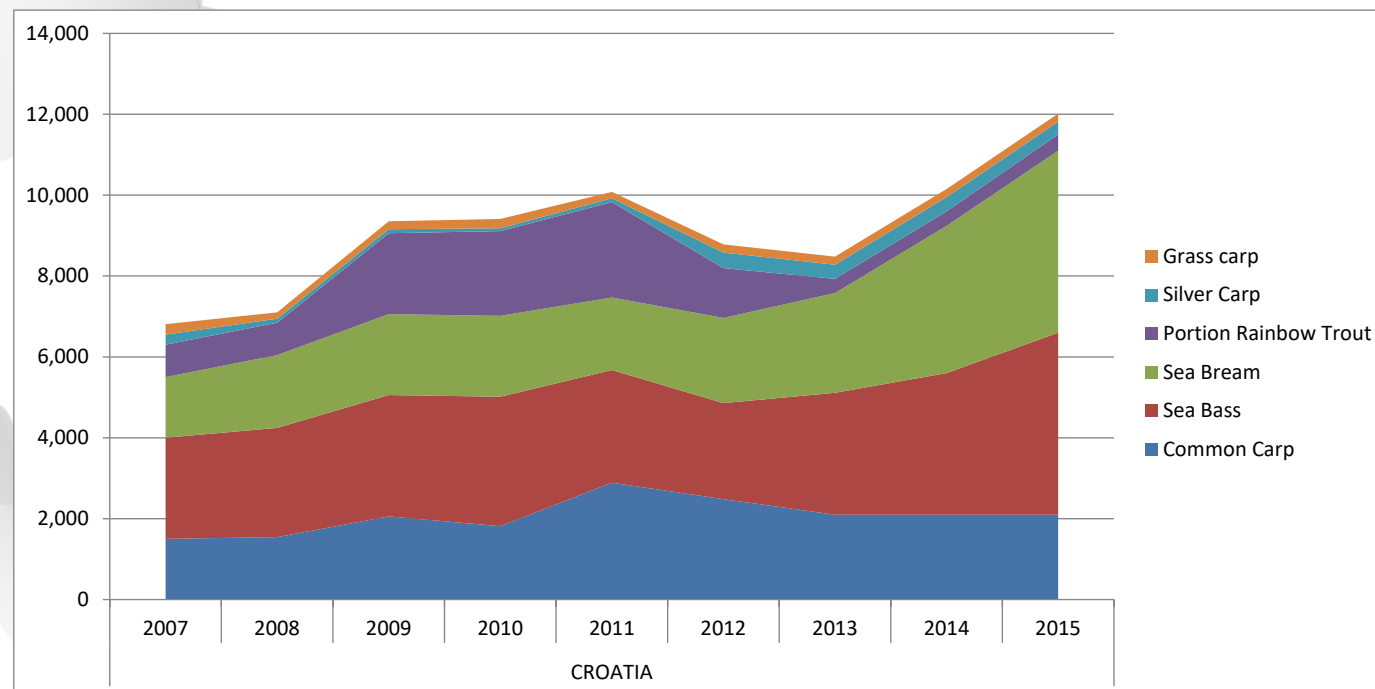
SPECIES	YEAR									
	2007	2008	2009	2010	2011	2012	2013	2014	2015	
Sea Bream	1,500	1,800	2,000	2,000	1,793	2,105	2,466	3,640	4,500	
Sea Bass	2,500	2,700	3,000	3,200	2,785	2,375	3,014	3,500	4,500	
Common Carp	1,503	1,546	2,058	1,816	2,891	2,484	2,100	2,100	2,100	
Portion Rainbow Trout	800	800	2,000	2,095	2,358	1,232	350	361	400	
Silver Carp	250	100	100	70	95	384	350	350	315	
Grass carp	257	156	196	231	158	202	200	200	200	
TOTAL	6,810	7,102	9,354	9,412	10,080	8,782	8,480	10,151	12,015	

SOURCE: Croatia chamber of Economy - Aquaculture unit

NOTES:

* from 2012 onwards figures for bighead carp included in the silver carp data

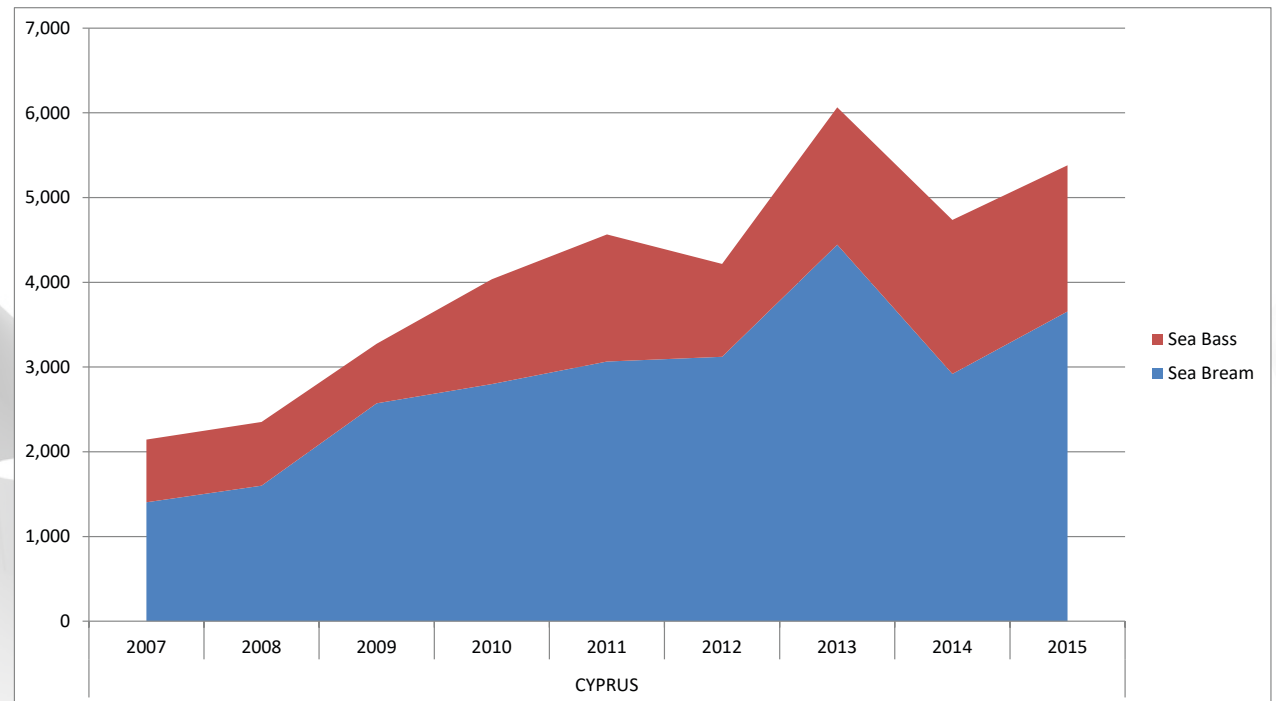
* species with lower production than 100T are not included(perch, eel, catfish, meagre)

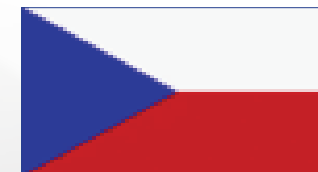




SPECIES	YEAR									
	2007	2008	2009	2010	2011	2012	2013	2014	2015	
Sea Bream	1,404	1,600	2,572	2,799	3,065	3,121	4,444	2,919	3,656	
Sea Bass	740	752	703	1,237	1,500	1,096	1,621	1,817	1,725	
	2,144	2,352	3,275	4,036	4,565	4,217	6,065	4,736	5,381	

SOURCE: Cyprus Mariculture Association

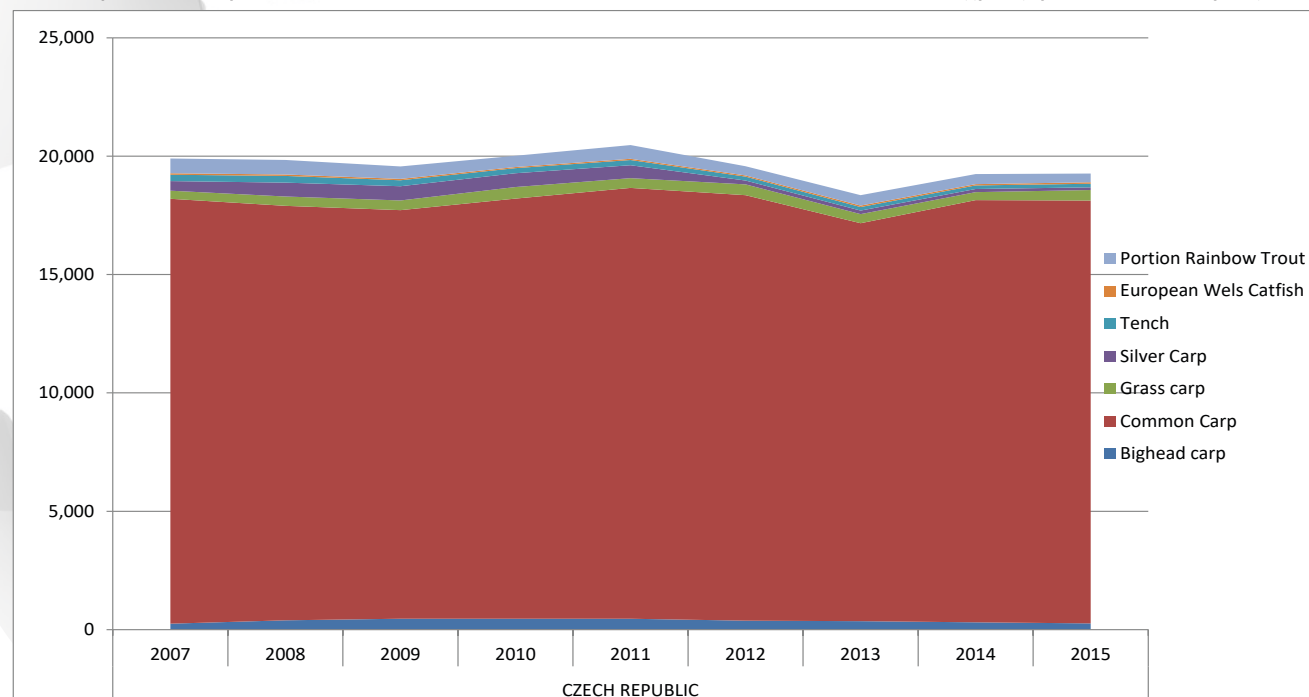


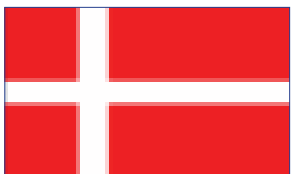


SPECIES	YEAR									
	2007	2008	2009	2010	2011	2012	2013	2014	2015	
Common Carp	17,947	17,507	17,258	17,746	18,198	17,972	16,809	17,833	17,860	
Portion Rainbow Trout	623	614	526	476	580	388	439	426	368	
Grass carp	342	394	409	488	412	456	384	337	445	
Bighead carp	252	394	461	461	460	379	358	309	264	
Tench	268	284	252	215	220	166	150	151	152	
Silver Carp	405	586	601	583	546	162	150	133	113	
European Wels Catfish	63	60	58	47	52	50	61	54	63	
	19,900	19,839	19,565	20,016	20,468	19,573	18,351	19,243	19,265	

SOURCE: Czech Fish Farmers Association

NOTE: Species with production < 100T without reliable data sources are not mentioned ((pike)-perch, northern pike)

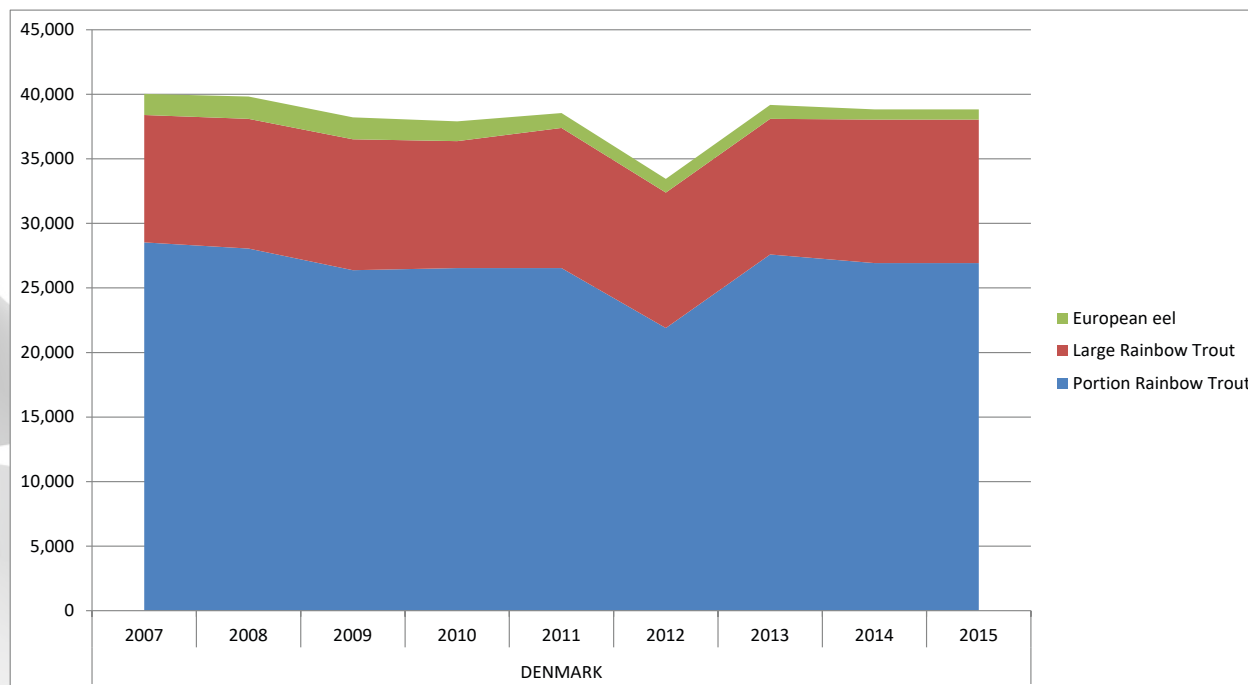




SPECIES	YEAR									
	2007	2008	2009	2010	2011	2012	2013	2014	2015	
Portion Rainbow Trout	28,527	28,050	26,374	26,538	26,538	21,895	27,591	26,925	26,925	
Large Rainbow Trout	9,867	10,046	10,139	9,832	10,854	10,491	10,506	11,115	11,115	
European eel	1,636	1,729	1,699	1,532	1,154	1,061	1,079	789	789	
	40,030	39,825	38,212	37,902	38,546	33,447	39,176	38,829	38,829	

Source: Statistics Denmark

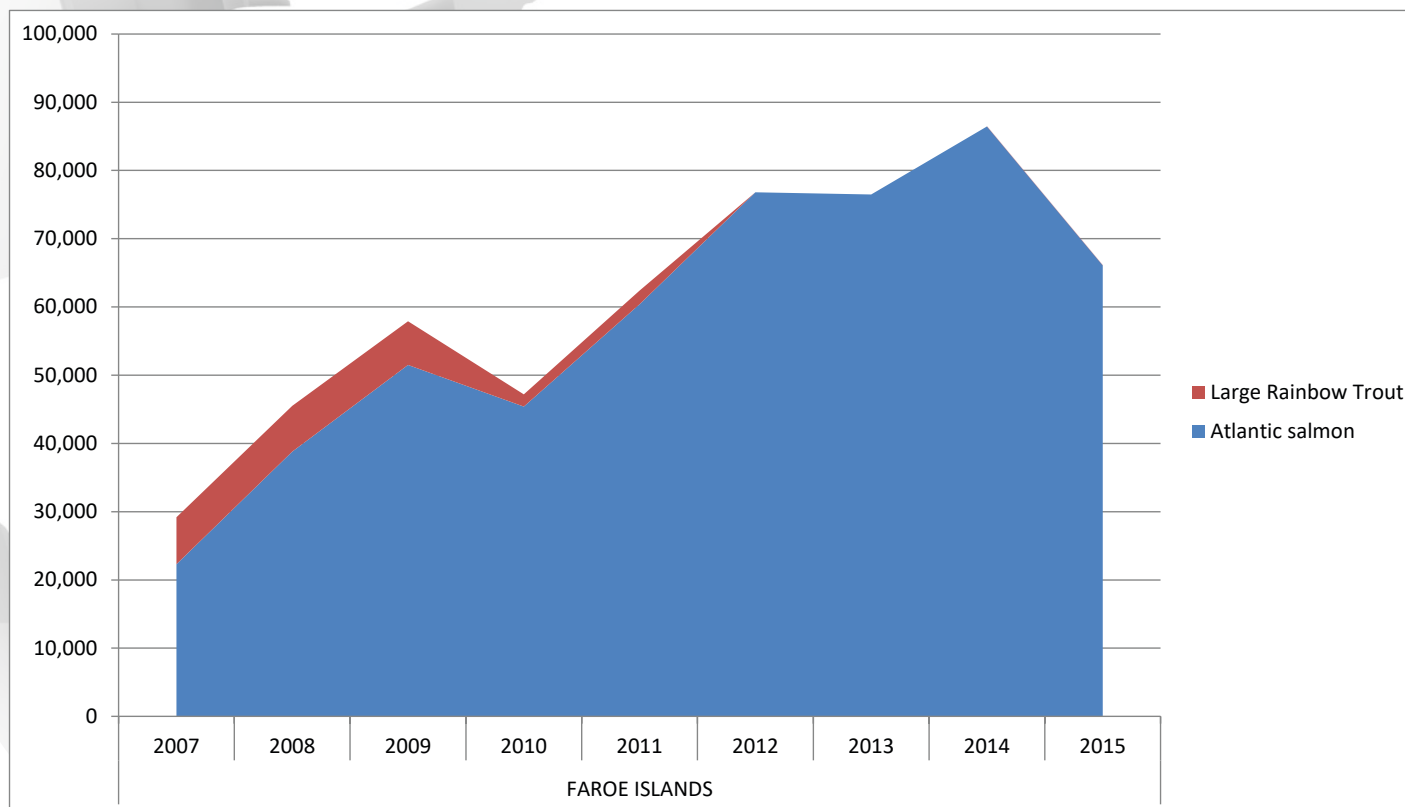
Data not available for 2015

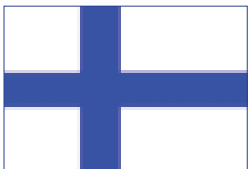




SPECIES	YEAR									
	2007	2008	2009	2010	2011	2012	2013	2014	2015	
Atlantic salmon	22,300	38,800	51,500	45,400	60,400	76,800	76,480	86,449	66,090	
Large Rainbow Trout	6,883	6,706	6,400	1,790	2,000	0	0	0		
	29,183	45,506	57,900	47,190	62,400	76,800	76,480	86,449	66,090	

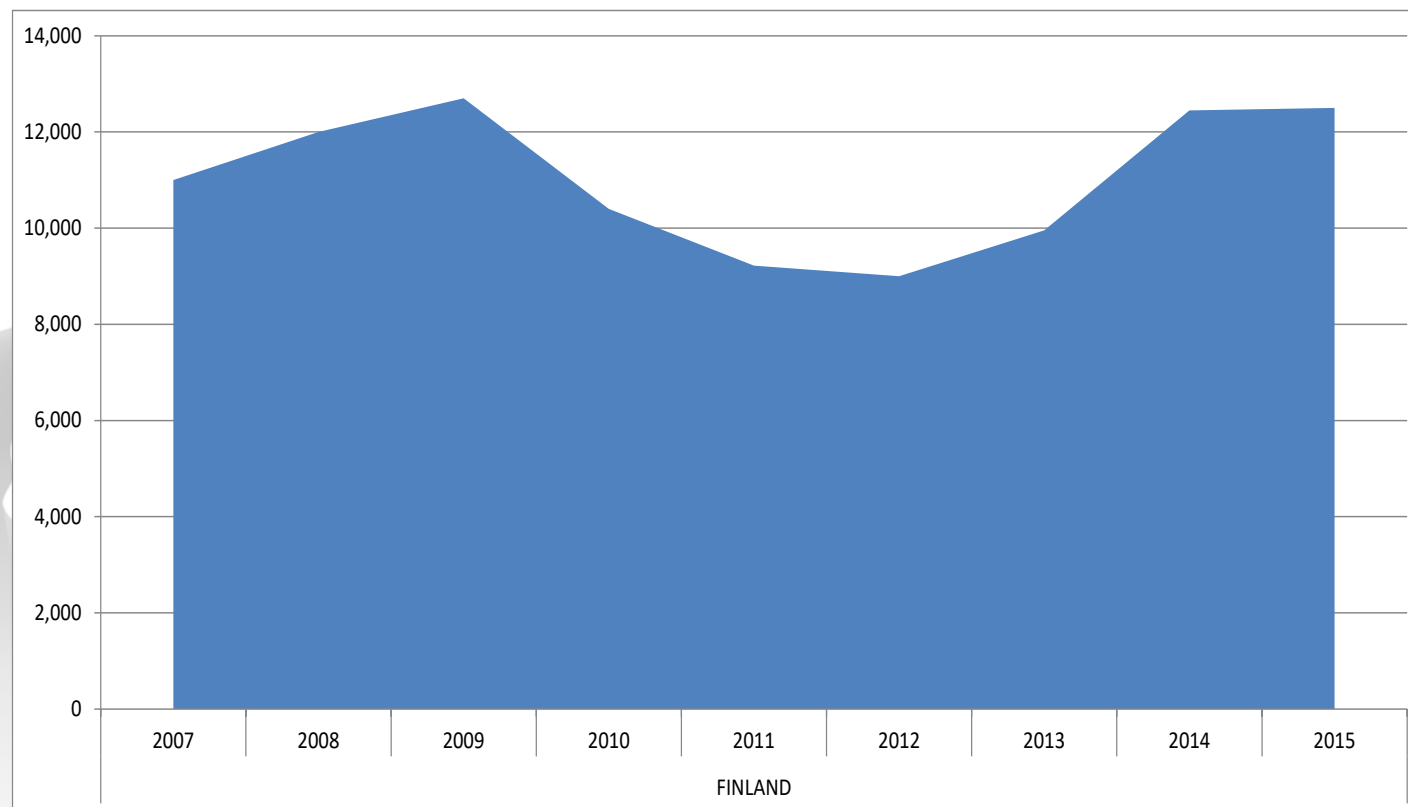
Source: Faroese Fish Farming Association

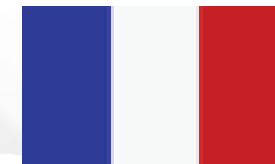




SPECIES	YEAR									
	2007	2008	2009	2010	2011	2012	2013	2014	2015	
Large Rainbow Trout	11,000	12,000	12,700	10,400	9,220	9,000	9,954	12,448	12,500	
	11,000	12,000	12,700	10,400	9,220	9,000	9,954	12,448	12,500	

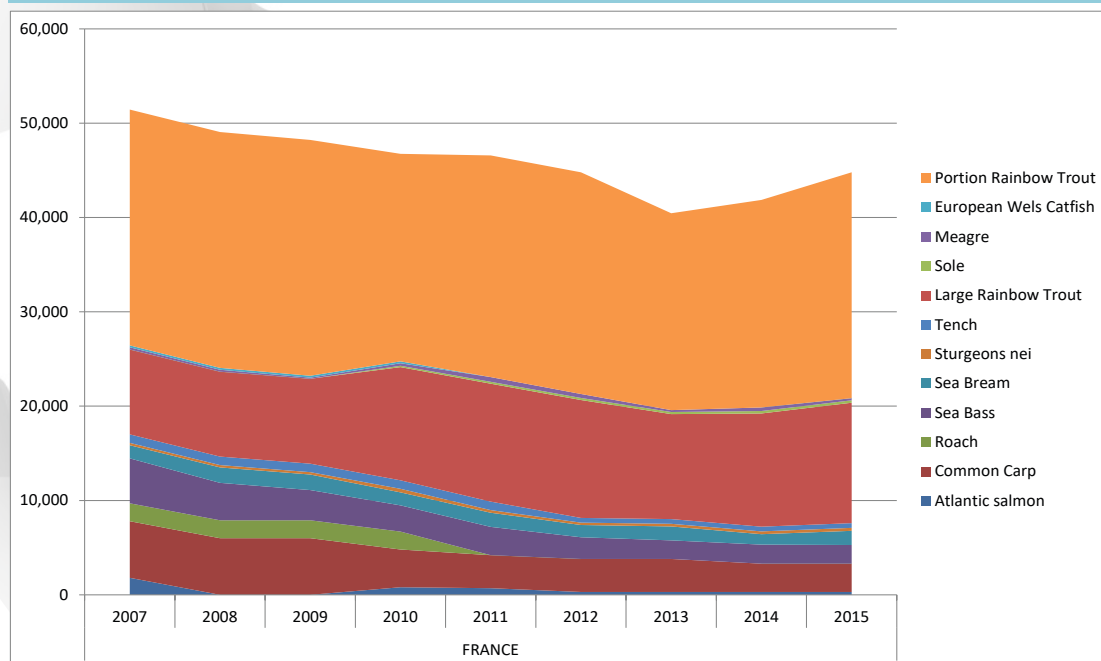
Source: Finnish Fish Farmers' Association





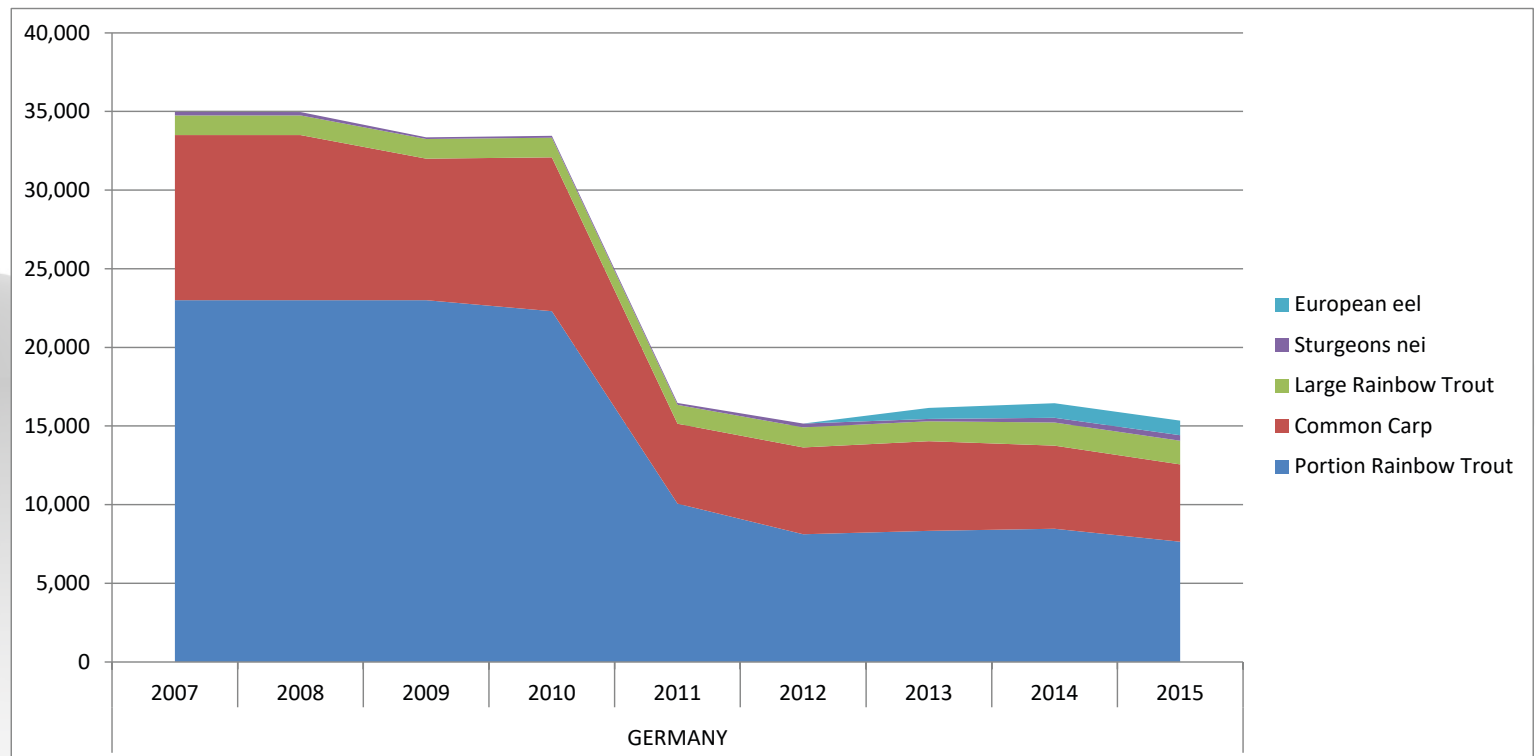
SPECIES	YEAR									
	2007	2008	2009	2010	2011	2012	2013	2014	2015	
Portion Rainbow Trout	25,000	25,000	25,000	22,000	23,500	23,500	20,870	22,000	23,947	
Large Rainbow Trout	9,000	9,000	9,000	12,000	12,500	12,500	11,130	12,000	12,766	
Common Carp	6,000	6,000	6,000	4,000	3,500	3,500	3,500	3,000	3,000	
Sea Bass	4,764	3,968	3,204	2,779	3,000	2,300	1,970	2,021	1,980	
Sea Bream	1,392	1,636	1,648	1,377	1,500	1,300	1,477	1,105	1,502	
Tench	900	900	900	900	900	500	500	500	500	
Meagre	235	206	121	268	500	420	200	377	226	
Atlantic salmon	1,800	0	0	802	700	300	300	300	300	
Sturgeons nei	250	250	250	380	280	250	280	298	315	
Turbot	850	850	531	394	300	250	255	279	303	
Sole	0	0	0	142	200	220	223	261	256	
Total	50,191	47,810	46,654	45,042	46,880	45,040	40,705	42,141	45,095	

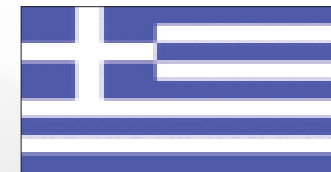
SOURCE: Fédération Française d'Aquaculture





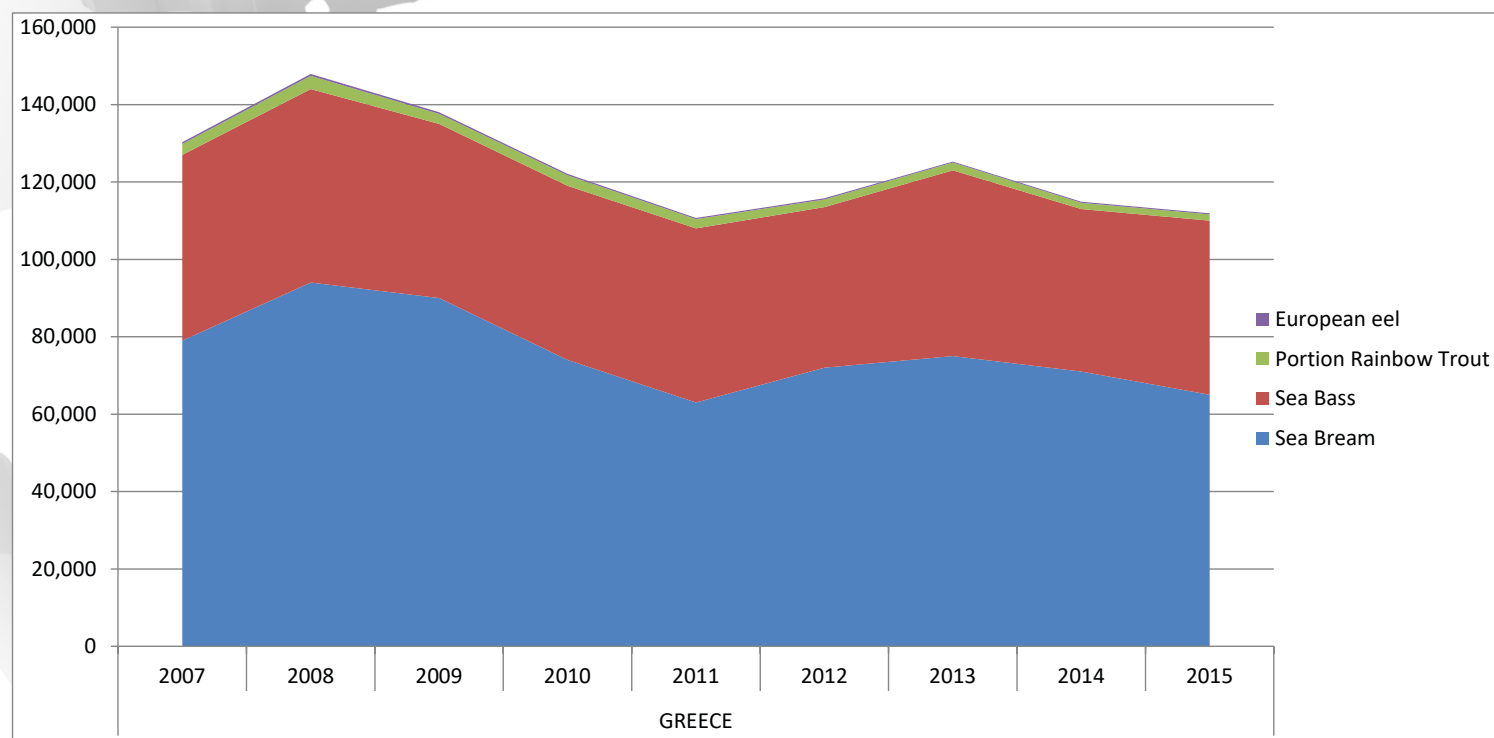
SPECIES	YEAR									
	2007	2008	2009	2010	2011	2012	2013	2014	2015	
Portion Rainbow Trout	23,000	23,000	23,000	22,300	10,062	8,116	8,333	8,466	7,642	
Common Carp	10,500	10,500	9,000	9,783	5,082	5,521	5,700	5,285	4,916	
Large Rainbow Trout	1,250	1,250	1,250	1,250	1,200	1,278	1,267	1,471	1,506	
European eel							700	927	927	
Sturgeons nei	228	214	106	120	120	240	150	300	350	
TOTAL	34,978	34,964	33,356	33,453	16,464	15,155	16,150	16,449	15,341	





SPECIES	YEAR									
	2007	2008	2009	2010	2011	2012	2013	2014	2015	
Sea Bream	79,000	94,000	90,000	74,000	63,000	72,000	75,000	71,000	65,000	
Sea Bass	48,000	50,000	45,000	45,000	45,000	41,500	48,000	42,000	45,000	
Portion Rainbow Trout	2,820	3,420	2,588	2,712	2,389	1,967	2,014	1,611	1,611	
European eel	454	489	428	372	304	322	250	285	285	
Total	130,274	147,909	138,016	122,084	110,693	115,789	125,264	114,896	111,896	

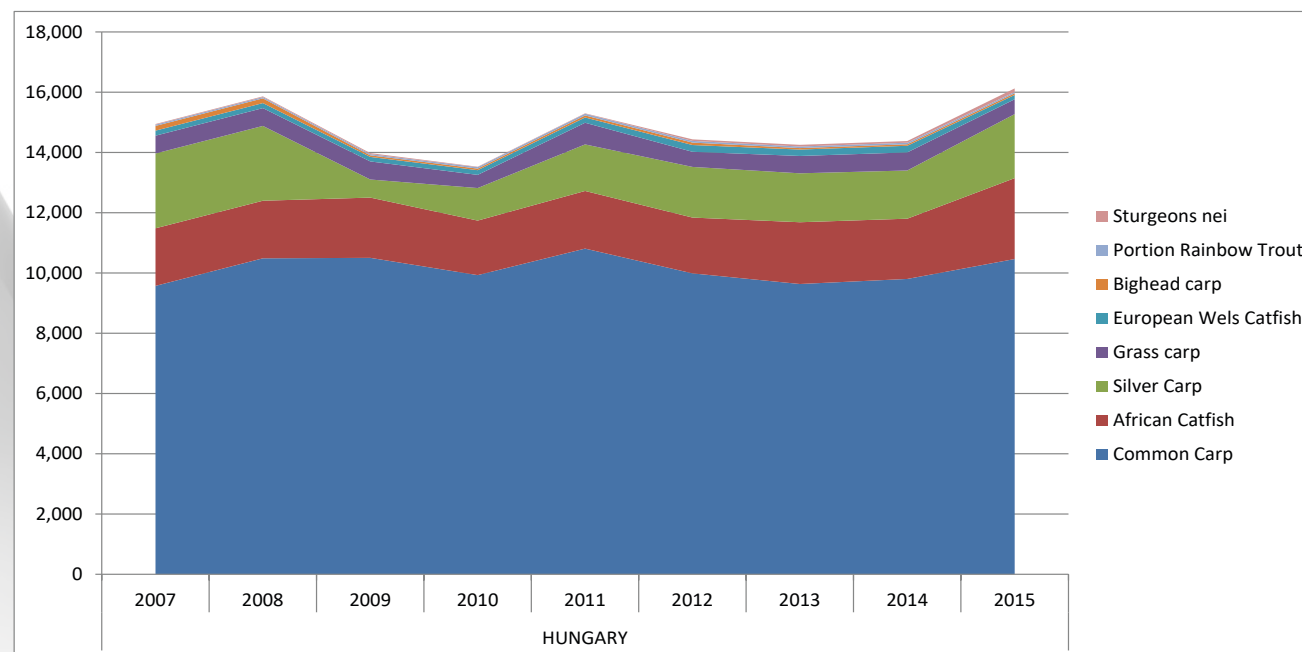
Source: Federation of Greek Maricultures

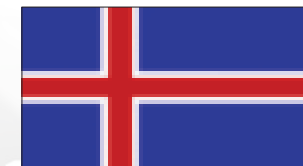




SPECIES	YEAR									
	2007	2008	2009	2010	2011	2012	2013	2014	2015	
Common Carp	9,570	10,485	10,500	9,927	10,807	9,985	9,632	9,800	10,461	
African Catfish	1,911	1,911	2,000	1,810	1,913	1,852	2,050	2,000	2,685	
Silver Carp	2,483	2,483	600	1,080	1,545	1,681	1,624	1,600	2,125	
Grass carp	591	591	600	437	719	502	576	600	493	
European Wels Catfish	167	167	150	156	175	225	212	220	143	
Sturgeons nei	21	24	34	14	14	51	56	56	120	
Portion Rainbow Trout	42	42	40	48	56	56	52	52	42	
Bighead carp	157	157	52	52	68	81	49	50	55	
	14,942	15,860	13,976	13,524	15,297	14,433	14,251	14,378	16,124	

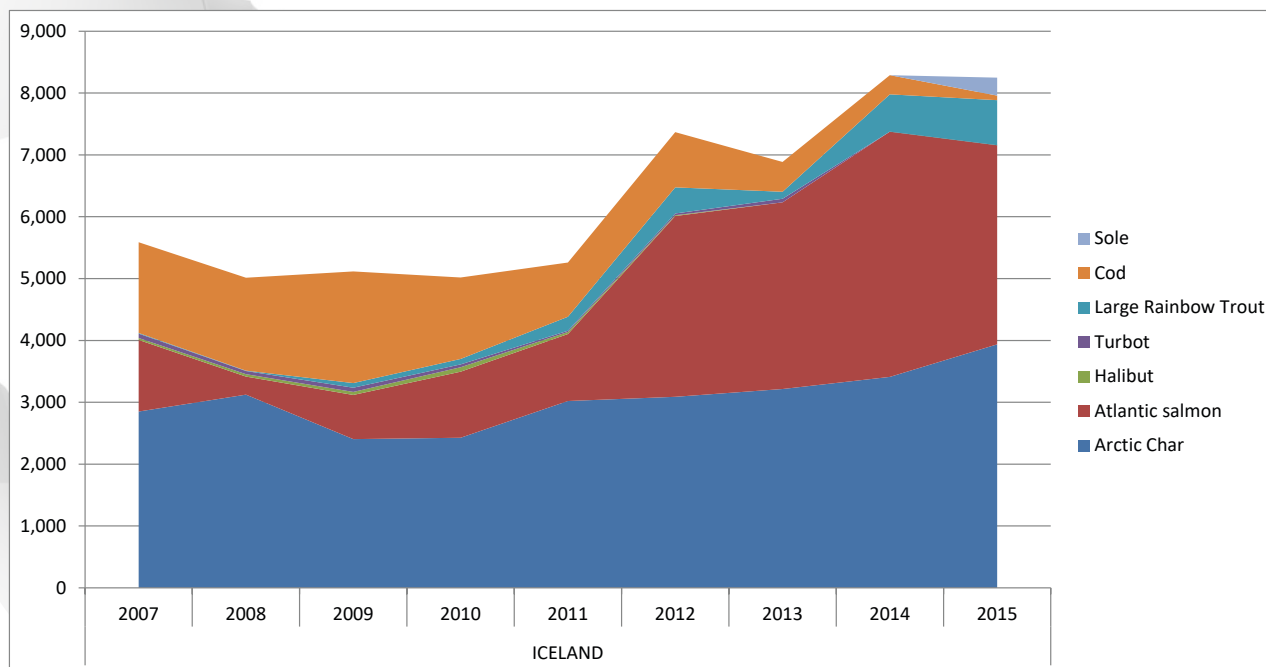
Source: Hungarian Fish Farmers' Association

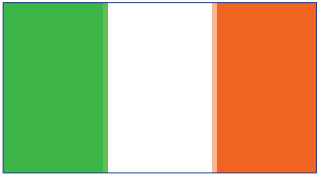




SPECIES	YEAR									
	2007	2008	2009	2010	2011	2012	2013	2014	2015	
Arctic Char	2,851	3,124	2,405	2,427	3,021	3,089	3,215	3,411	3,937	
Atlantic salmon	1,158	292	714	1,068	1,083	2,923	3,018	3,965	3,220	
Large Rainbow Trout	11	6	75	88	226	422	113	603	728	
Sole									290	
Cod	1,467	1,502	1,805	1,317	877	893	482	310	74	
Halibut	31	39	49	72	33	13	0	0	0	
Turbot	70	51	68	46	20	28	58	0	0	
Total	5,588	5,014	5,116	5,018	5,260	7,368	6,886	8,289	8,249	

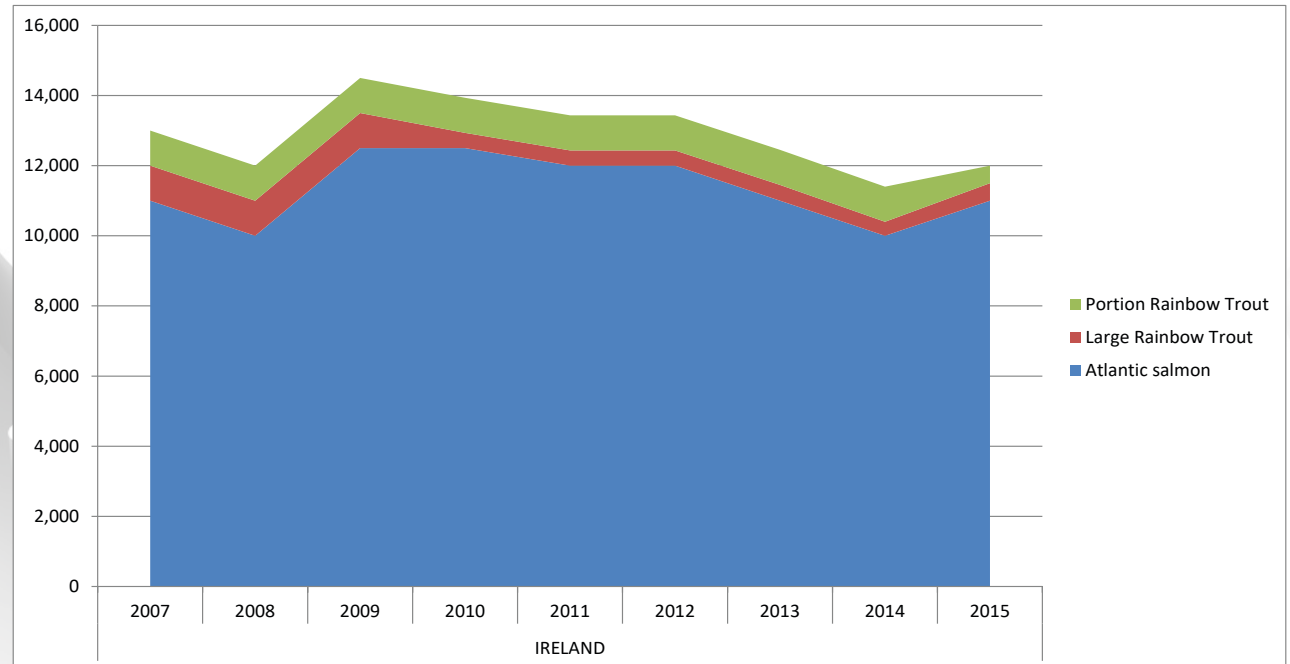
Source: Icelandic Aquaculture Association





SPECIES	YEAR									
	2007	2008	2009	2010	2011	2012	2013	2014	2015	
Atlantic salmon	11,000	10,000	12,500	12,500	12,000	12,000	11,000	10,000	11,000	
Portion Rainbow Trout	1,000	1,000	1,000	1,000	1,000	1,000	1,000	1,000	500	
Large Rainbow Trout	1,000	1,000	1,000	434	434	434	450	400	500	
	13,000	12,000	14,500	13,934	13,434	13,434	12,450	11,400	12,000	

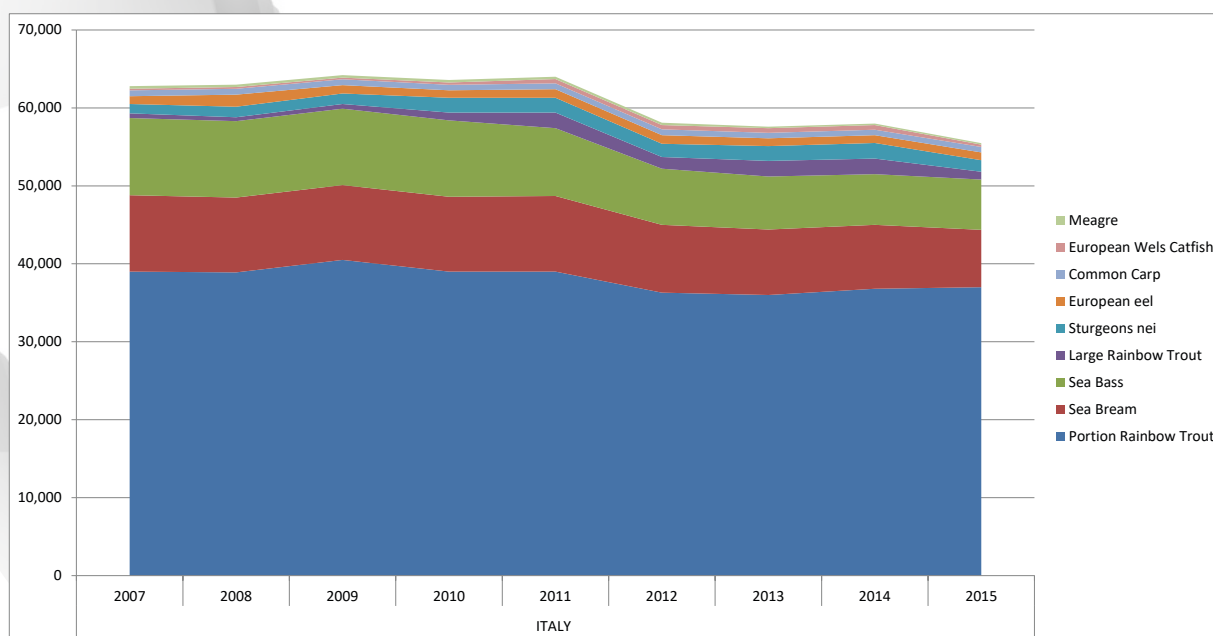
Source: IFA Aquaculture - Irish Salmon Growers' Association





SPECIES	YEAR									
	2007	2008	2009	2010	2011	2012	2013	2014	2015	
Portion Rainbow Trout	39,000	38,900	40,500	39,000	39,000	36,300	36,000	36,800	37,000	
Sea Bream	9,800	9,600	9,600	9,600	9,700	8,700	8,400	8,200	7,360	
Sea Bass	9,900	9,800	9,800	9,800	8,700	7,200	6,800	6,500	6,450	
Large Rainbow Trout	600	500	600	1,000	2,000	1,500	2,000	2,000	1,000	
Sturgeons nei	1,200	1,350	1,350	1,900	1,900	1,700	1,900	2,000	1,480	
European eel	1,000	1,550	1,070	960	1,100	1,100	1,000	1,000	1,000	
Common Carp	750	750	750	700	750	750	700	700	700	
European Wels Catfish*	206	230	215	300	550	550	600	600	300	
Meagre	335	300	320	320	300	300	190	190	190	
TOTAL	62,791	62,980	64,205	63,580	64,000	58,100	57,590	57,990	55,480	

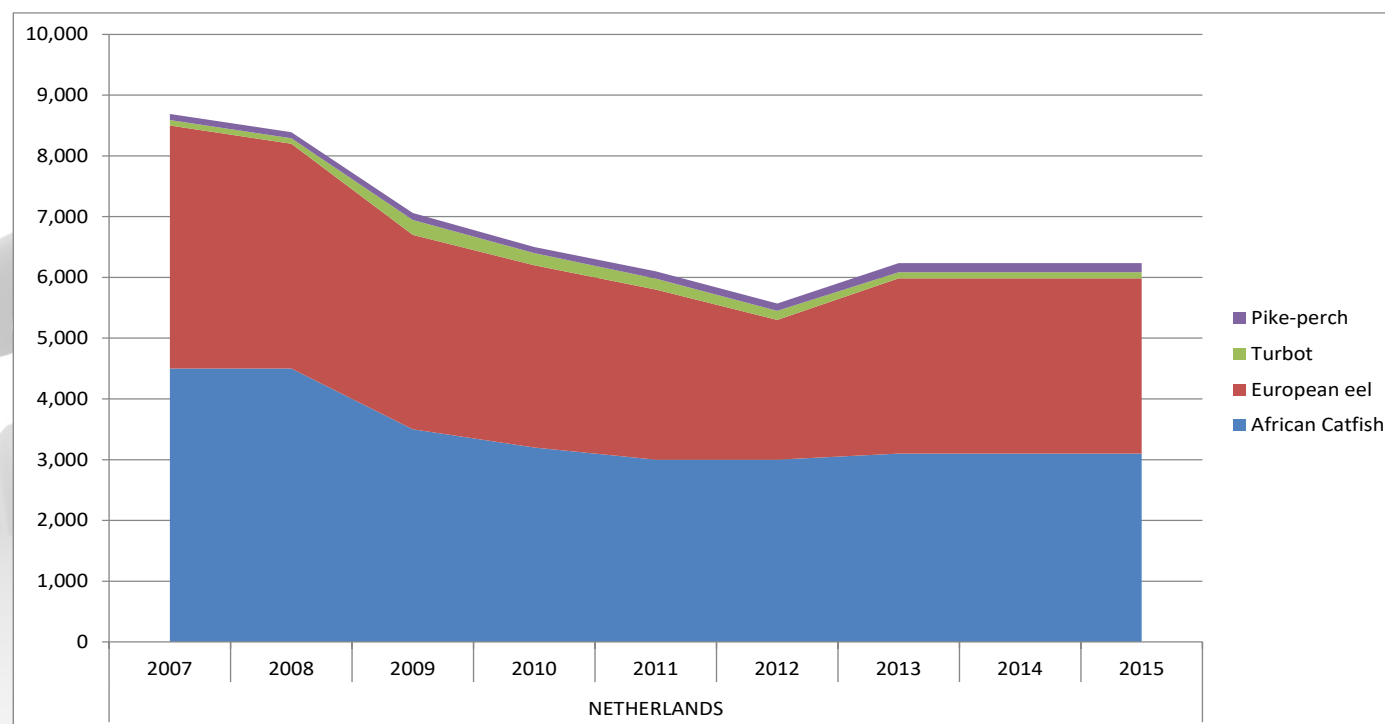
Source: Italian Fish Farmers' Association

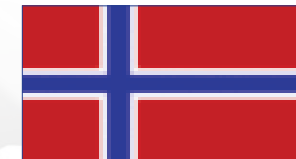




SPECIES	YEAR									
	2007	2008	2009	2010	2011	2012	2013	2014	2015	
African Catfish*	4,500	4,500	3,500	3,200	3,000	3,000	3,100	3,100	3,100	
European eel	4,000	3,700	3,200	3,000	2,800	2,300	2,885	2,885	2,885	
Pike-perch	100	100	115	100	120	120	150	150	150	
Turbot	90	90	245	200	180	150	100	100	100	
Total	8,690	8,390	7,060	6,500	6,100	5,570	6,235	6,235	6,235	

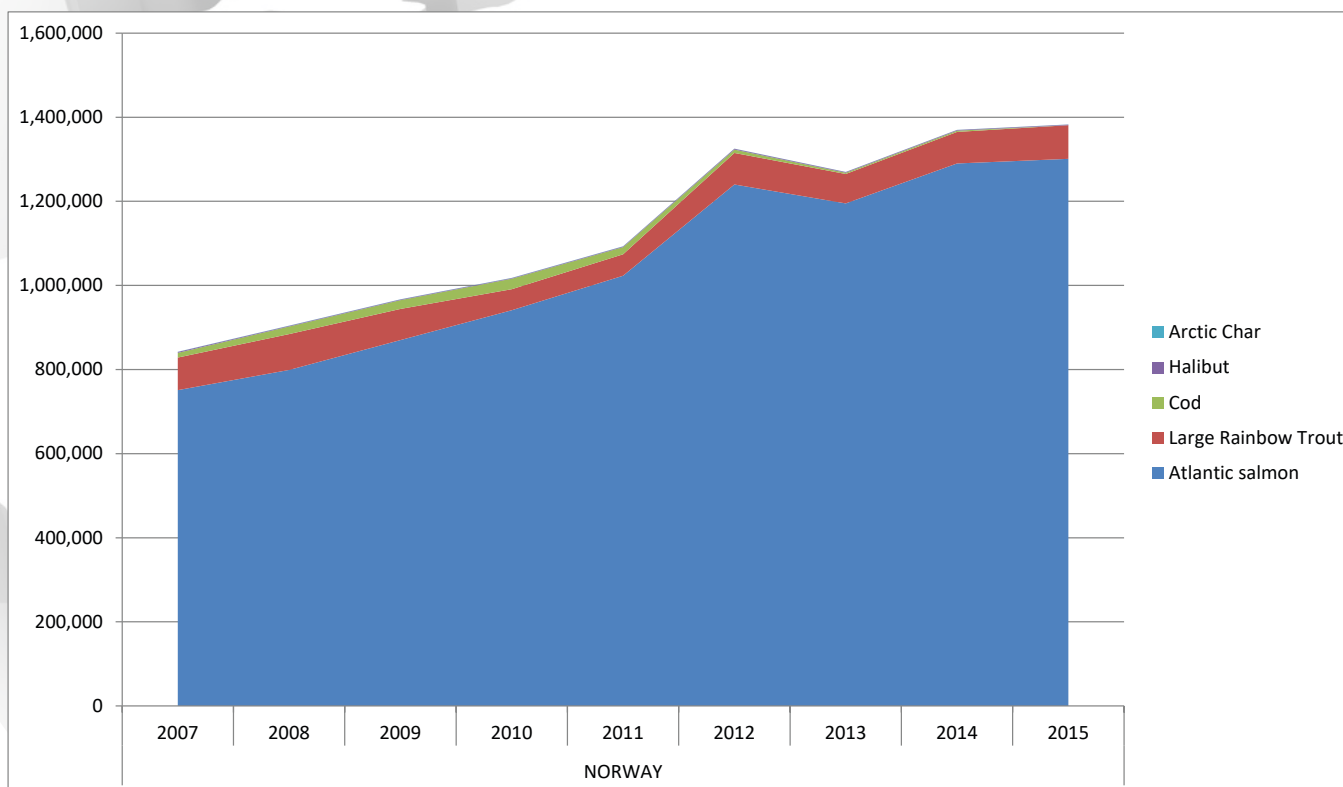
Source: PRODUCTSCHAP VIS / NEVEVI





SPECIES	YEAR									
	2007	2008	2009	2010	2011	2012	2013	2014	2015	
Atlantic salmon	751,000	799,000	870,000	941,001	1,023,000	1,240,000	1,195,000	1,290,000	1,301,000	
Large Rainbow Trout	77,465	85,266	74,072	50,000	51,000	75,000	70,000	75,000	80,000	
Cod	11,104	18,052	20,924	25,000	17,000	8,000	3,000	3,000	0	
Halibut	2,307	1,587	1,568	1,500	1,600	2,000	1,600	1,600	1,500	
Arctic Char	395	468	421	450	450	300	300	300	300	
Total	842,271	904,373	966,985	1,017,951	1,093,050	1,325,300	1,269,900	1,369,900	1,382,800	

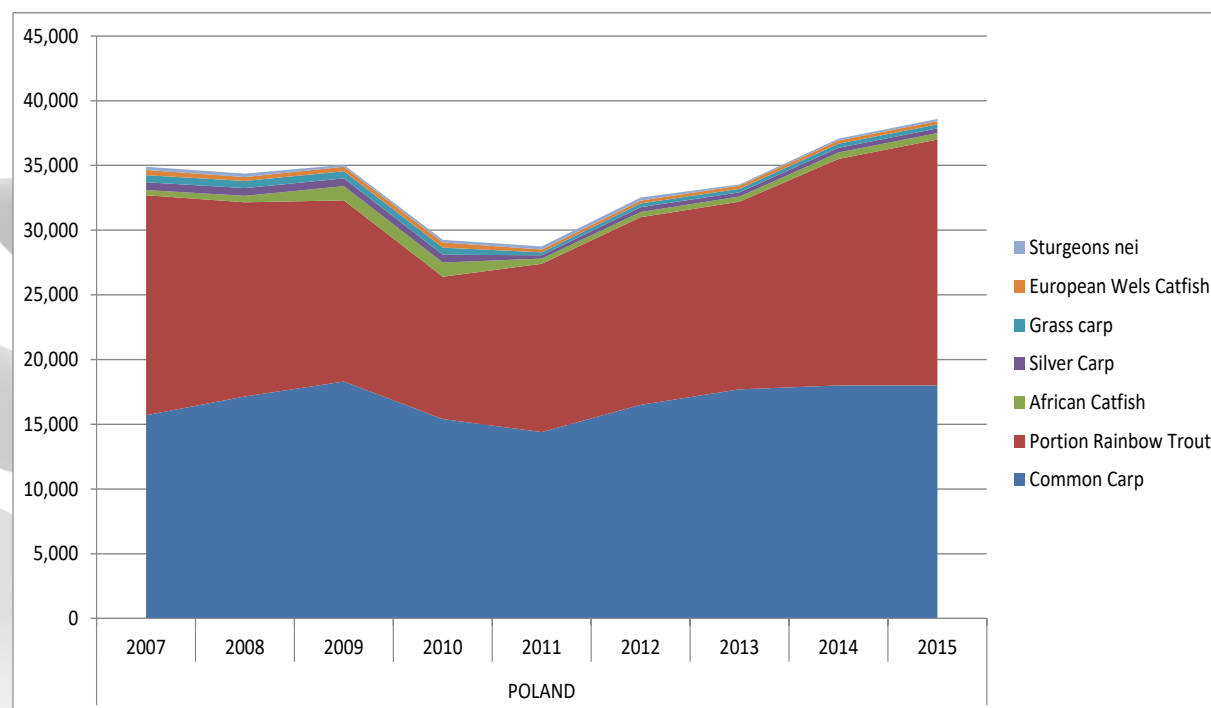
Source: Norwegian Seafood Federation





SPECIES	YEAR									
	2007	2008	2009	2010	2011	2012	2013	2014	2015	
Common Carp	15,698	17,150	18,300	15,400	14,400	16,500	17,700	18,000	18,000	
Portion Rainbow Trout	17,000	15,000	14,000	11,000	13,000	14,500	14,500	17,500	19,000	
African Catfish	400	500	1,100	1,100	400	400	400	500	500	
Silver Carp	600	600	600	600	260	374	320	360	360	
Grass carp	550	550	550	550	225	290	270	320	310	
European Wels Catfish	400	300	350	400	220	219	250	250	250	
Sturgeons nei	250	270	148	200	240	241	95	140	170	
	34,898	34,370	35,048	29,250	28,745	32,524	33,535	37,070	38,590	

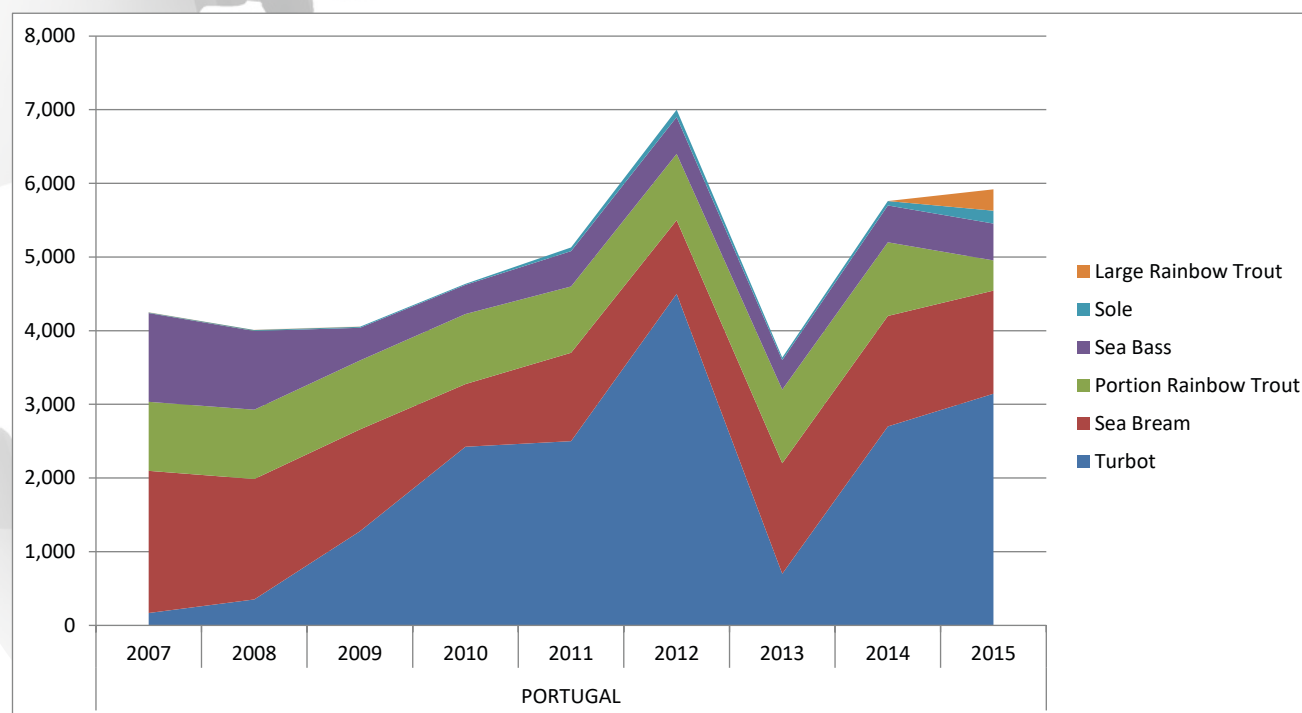
Source: Polish Trout Breeders' Association





SPECIES	YEAR									
	2007	2008	2009	2010	2011	2012	2013	2014	2015	
Turbot	167	351	1,276	2,424	2,500	4,500	700	2,700	3,144	
Sea Bream	1,930	1,635	1,383	851	1,200	1,000	1,500	1,500	1,400	
Portion Rainbow Trout	937	941	936	951	900	900	1,000	1,000	410	
Sea Bass	1,205	1,069	444	396	480	500	400	500	500	
Sole	8	13	14	14	50	100	35	60	175	
Large Rainbow Trout									290	
	4,247	4,009	4,053	4,636	5,130	7,000	3,635	5,760	5,919	

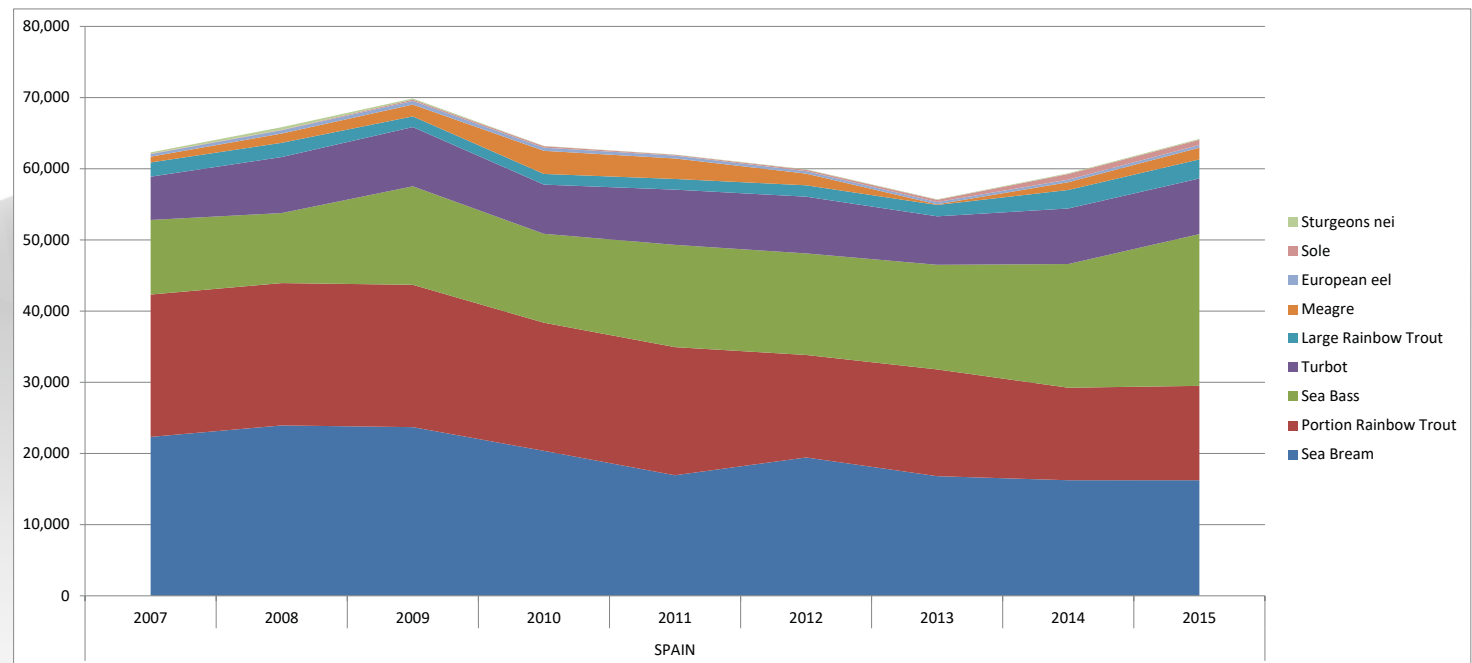
Source: Portuguese Association of Aquaculture





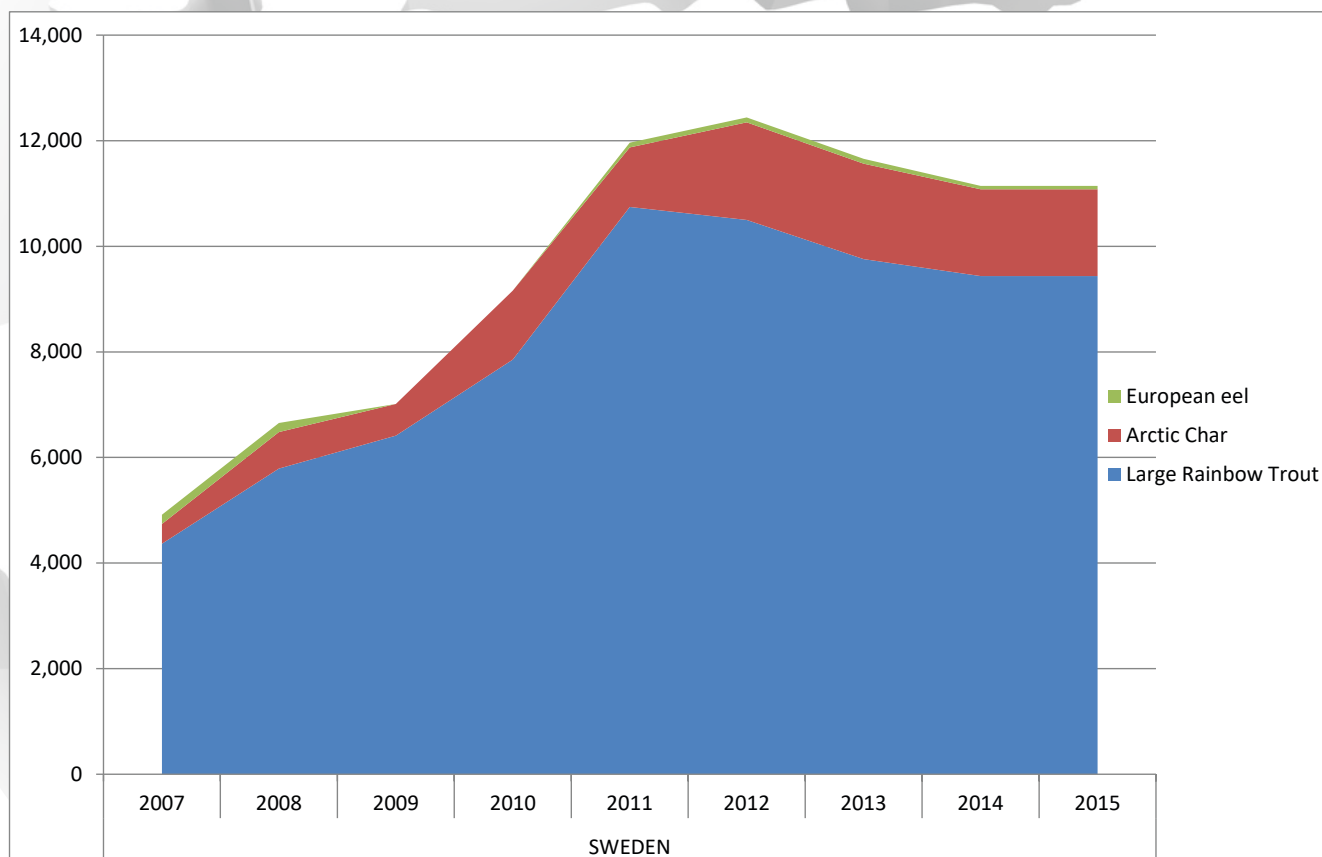
SPECIES	YEAR									
	2007	2008	2009	2010	2011	2012	2013	2014	2015	
Sea Bass	10,480	9,840	13,840	12,495	14,370	14,270	14,700	17,376	21,324	
Sea Bream	22,320	23,930	23,690	20,360	16,930	19,430	16,800	16,230	16,231	
Portion Rainbow Trout	20,000	20,000	20,000	18,000	18,000	14,400	15,000	13,000	13,260	
Turbot	6,080	7,870	8,320	6,910	7,760	7,970	6,810	7,808	7,815	
Large Rainbow Trout	2,000	2,000	1,500	1,500	1,500	1,600	1,600	2,600	2,678	
Meagre	810	1,300	1,660	3,250	2,880	1,640	90	1,090	1,642	
Sole	60	55	180	204	110	194	313	786	736	
European eel	360	470	510	446	402	350	315	366	380	
Sturgeons nei	183	370	166	35	40	66	66	100	120	
	62,293	65,835	69,866	63,200	61,992	59,920	55,694	59,356	64,186	

Source: APROMAR - Asociación Empresarial de Productores de Cultivos Marinos & ESACUA - Spanish Freshwater Producers Association





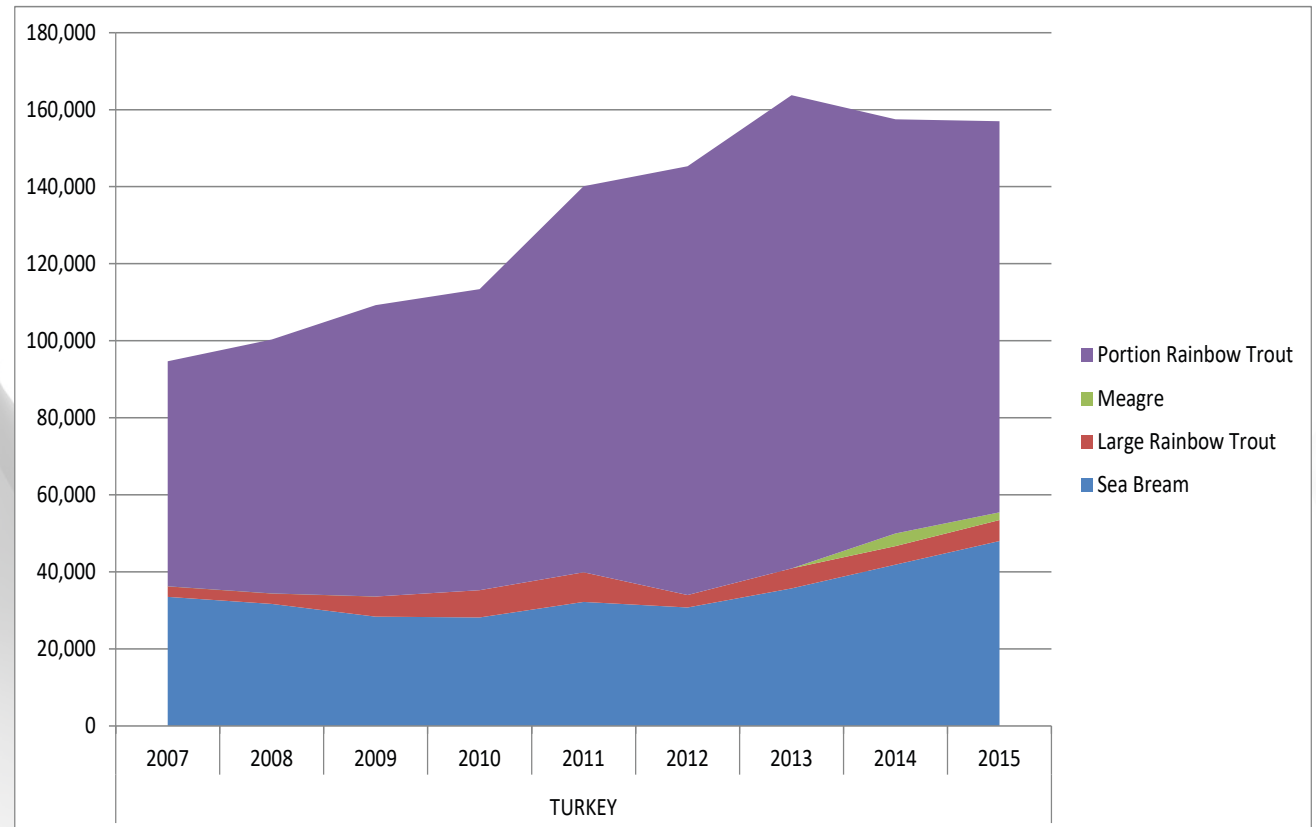
SPECIES	YEAR									
	2007	2008	2009	2010	2011	2012	2013	2014	2015	
Large Rainbow Trout	4,366	5,789	6,413	7,854	10,745	10,499	9,757	9,436	9,436	
Arctic Char	374	692	600	1,307	1,128	1,849	1,808	1,644	1,644	
European eel	175	172	0	0	90	93	92	64	64	
	4,915	6,653	7,013	9,161	11,963	12,441	11,657	11,144	11,144	

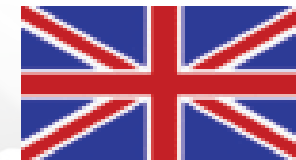




SPECIES	YEAR									
	2007	2008	2009	2010	2011	2012	2013	2014	2015	
Portion Rainbow Trout	58,433	65,928	75,657	78,165	100,239	111,335	122,873	107,533	101,550	
Sea Bream	33,500	31,670	28,362	28,157	32,187	30,743	35,701	41,873	48,000	
Large Rainbow Trout	2,740	2,721	5,229	7,079	7,697	3,234	5,186	4,812	5,450	
Meagre								3,281	2,000	
Total	94,673	100,319	109,248	113,401	140,123	145,312	163,760	157,499	157,000	

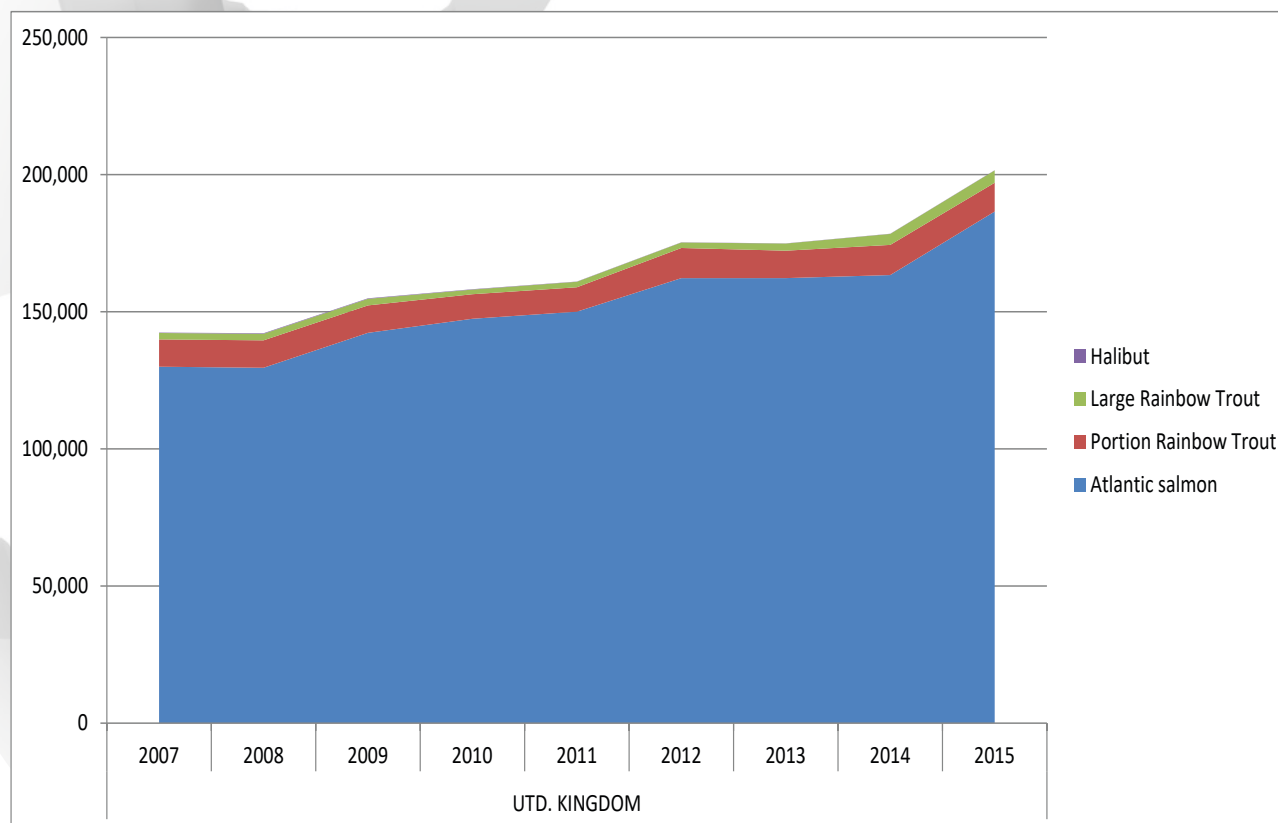
Source: Turkish National Aquaculture Producers' Union





SPECIES	YEAR									
	2007	2008	2009	2010	2011	2012	2013	2014	2015	
Atlantic salmon	129,930	129,545	142,283	147,412	150,000	162,223	162,234	163,347	186,508	
Portion Rainbow Trout	9,955	10,000	10,000	8,950	8,900	10,996	10,000	11,000	10,500	
Large Rainbow Trout	2,341	2,390	2,400	1,690	2,000	2,000	2,600	4,000	4,500	
Halibut	147	206	189	139	83	73	63	70	70	
TOTAL	142,373	142,141	154,872	158,191	160,983	175,292	174,897	178,417	201,578	

Source: Scottish Salmon Producers' Association and British Trout Association



This FEAP Production report includes data on the following fish species reared in European aquaculture

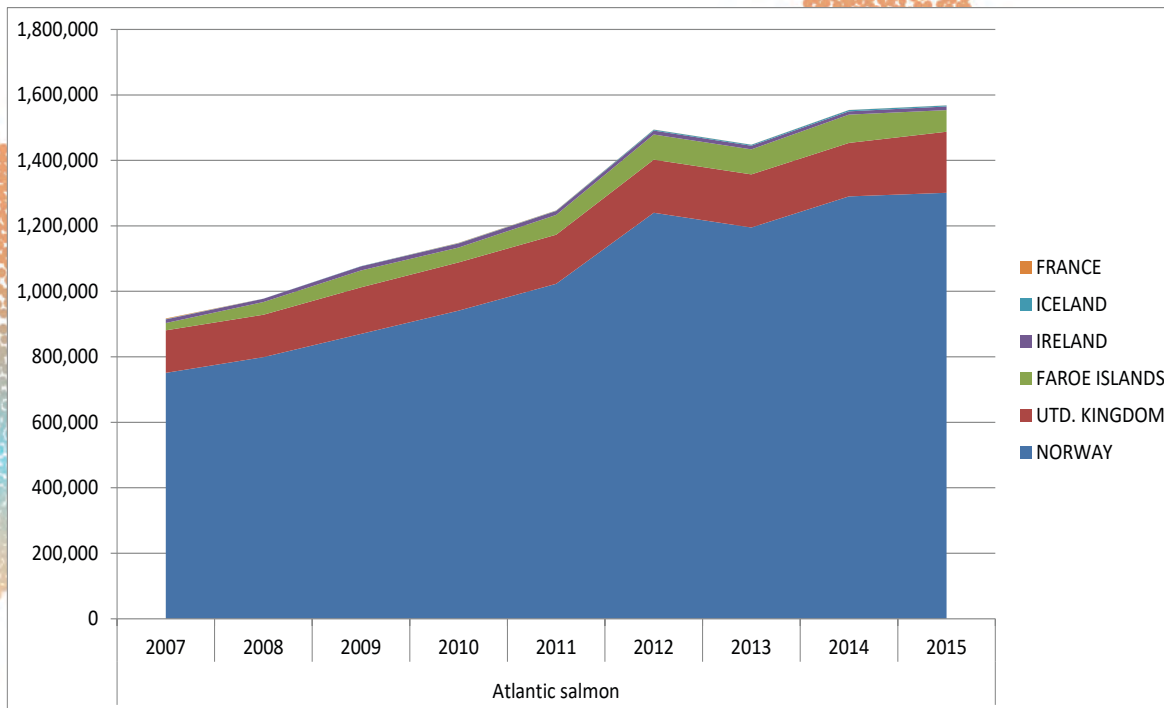
- Atlantic salmon
- Large (>1.2kg) and portion-size (<1.2kg) rainbow trout
- Arctic char, halibut and cod
- Common carp and other cyprinid species
- Catfish species
- European eel
- Sturgeon and caviar
- European seabass
- Gilthead seabream
- Sea bass & sea bream juveniles
- Turbot, sole and meagre

Production data for tuna and some freshwater species (perch, pike-perch, Northern pike...) have not been included due to the current lack of reliable data.



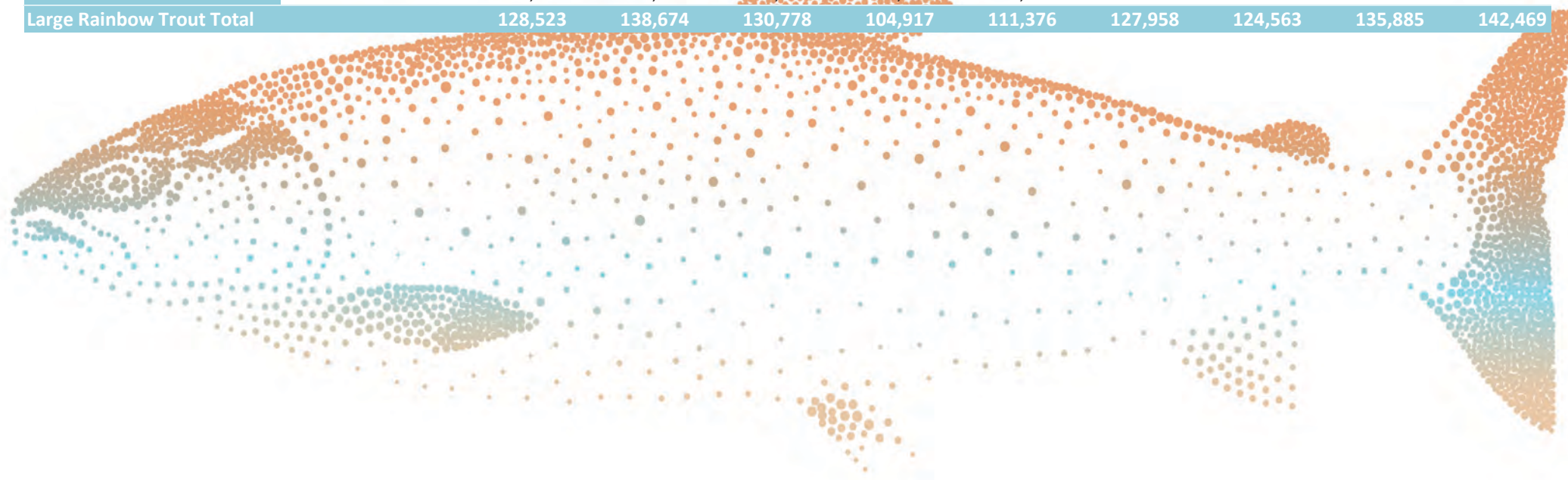
ATLANTIC SALMON (SALMO SALAR)

PRODUCTION (tons)		YEAR									
SPECIES	COUNTRY	2007	2008	2009	2010	2011	2012	2013	2014	2015	
Atlantic salmon	NORWAY	751,000	799,000	870,000	941,001	1,023,000	1,240,000	1,195,000	1,290,000	1,301,000	
	UTD. KINGDOM	129,930	129,545	142,283	147,412	150,000	162,223	162,234	163,347	186,508	
	FAROE ISLANDS	22,300	38,800	51,500	45,400	60,400	76,800	76,480	86,449	66,090	
	IRELAND	11,000	10,000	12,500	12,500	12,000	12,000	11,000	10,000	11,000	
	ICELAND	1,158	292	714	1,068	1,083	2,923	3,018	3,965	3,220	
	FRANCE	1,800	0	0	802	700	300	300	300	300	
Atlantic salmon Total		917,188	977,637	1,076,997	1,148,183	1,247,183	1,494,246	1,448,032	1,554,061	1,568,118	

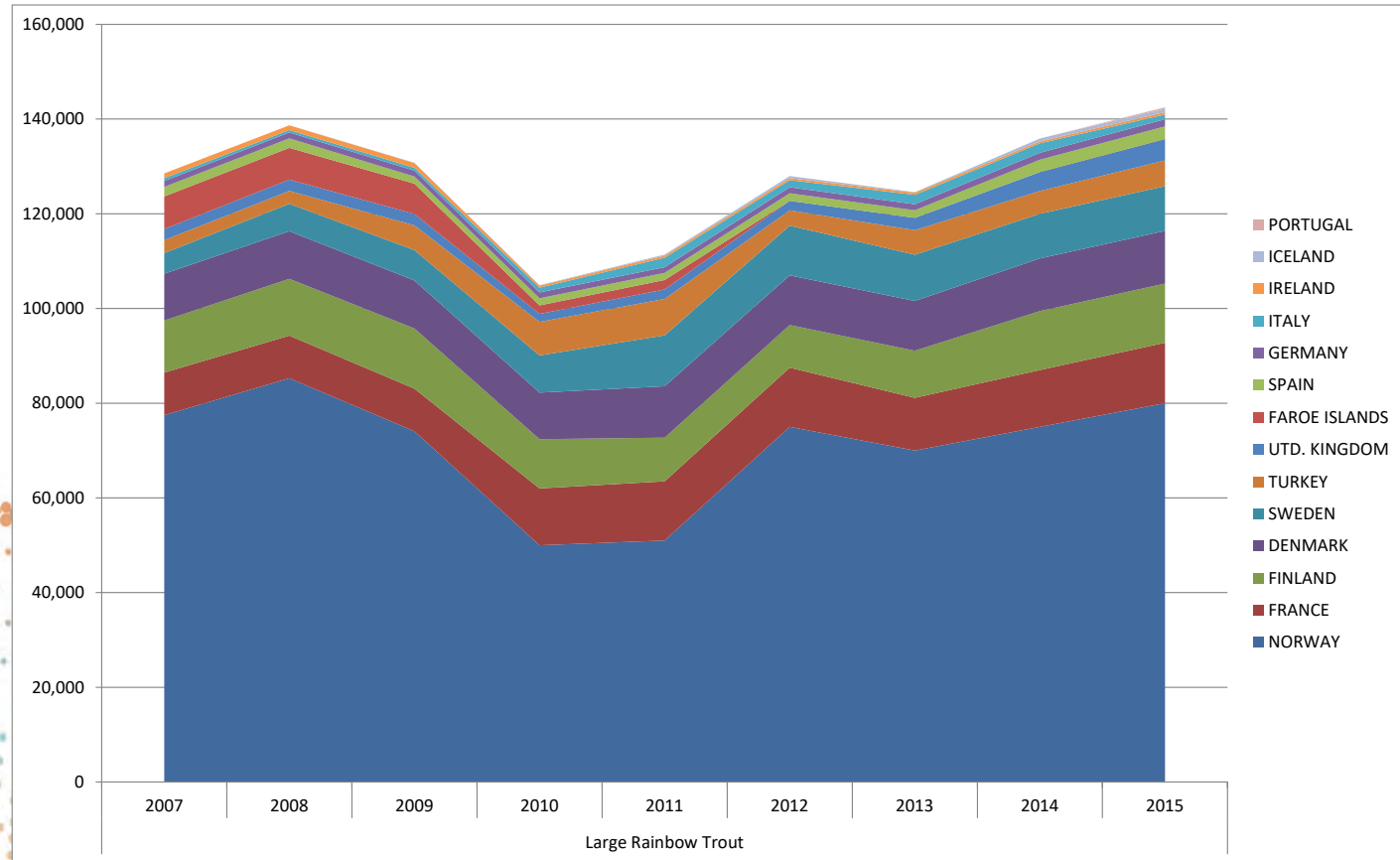


LARGE RAINBOW TROUT (ONCORHYNCHUS MYKISS)

PRODUCTION (tons)		YEAR									
SPECIES	COUNTRY	2007	2008	2009	2010	2011	2012	2013	2014	2015	
Large Rainbow Trout	NORWAY	77,465	85,266	74,072	50,000	51,000	75,000	70,000	75,000	80,000	
	FINLAND	11,000	12,000	12,700	10,400	9,220	9,000	9,954	12,448	12,500	
	FRANCE	9,000	9,000	9,000	12,000	12,500	12,500	11,130	12,000	12,766	
	DENMARK	9,867	10,046	10,139	9,832	10,854	10,491	10,506	11,115	11,115	
	SWEDEN	4,366	5,789	6,413	7,854	10,745	10,499	9,757	9,436	9,436	
	TURKEY	2,740	2,721	5,229	7,079	7,697	3,234	5,186	4,812	5,450	
	UTD. KINGDOM	2,341	2,390	2,400	1,690	2,000	2,000	2,600	4,000	4,500	
	SPAIN	2,000	2,000	1,500	1,500	1,500	1,600	1,600	2,600	2,678	
	ITALY	600	500	600	1,000	2,000	1,500	2,000	2,000	1,000	
	GERMANY	1,250	1,250	1,250	1,250	1,200	1,278	1,267	1,471	1,506	
	ICELAND	11	6	75	88	226	422	113	603	728	
	IRELAND	1,000	1,000	1,000	434	434	434	450	400	500	
	PORTUGAL									290	
		FAROE ISLANDS	6,883	6,706	6,400	1,790	2,000	0	0	0	
Large Rainbow Trout Total		128,523	138,674	130,778	104,917	111,376	127,958	124,563	135,885	142,469	

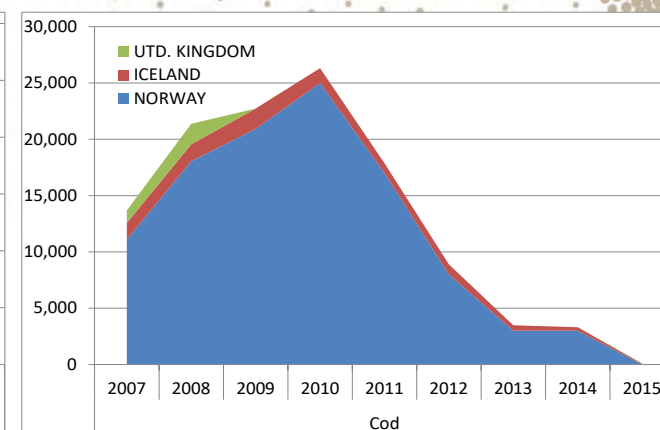
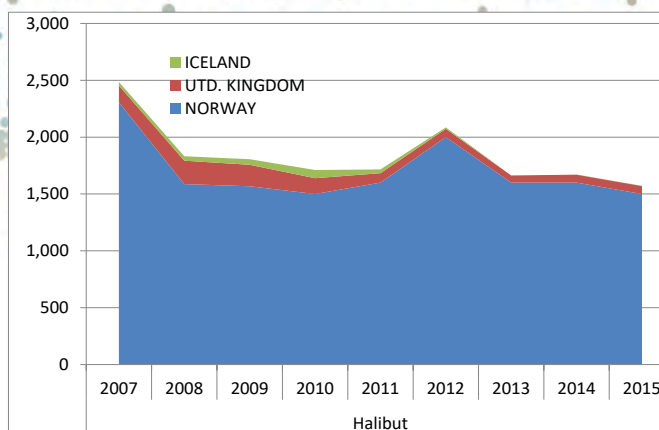
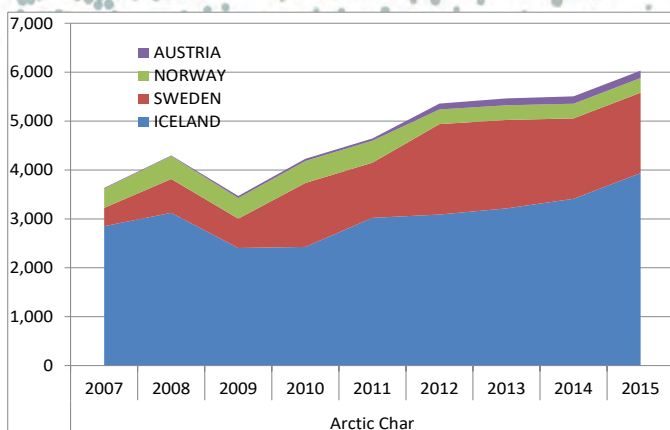


LARGE RAINBOW TROUT (*ONCORHYNCHUS MYKISS*)



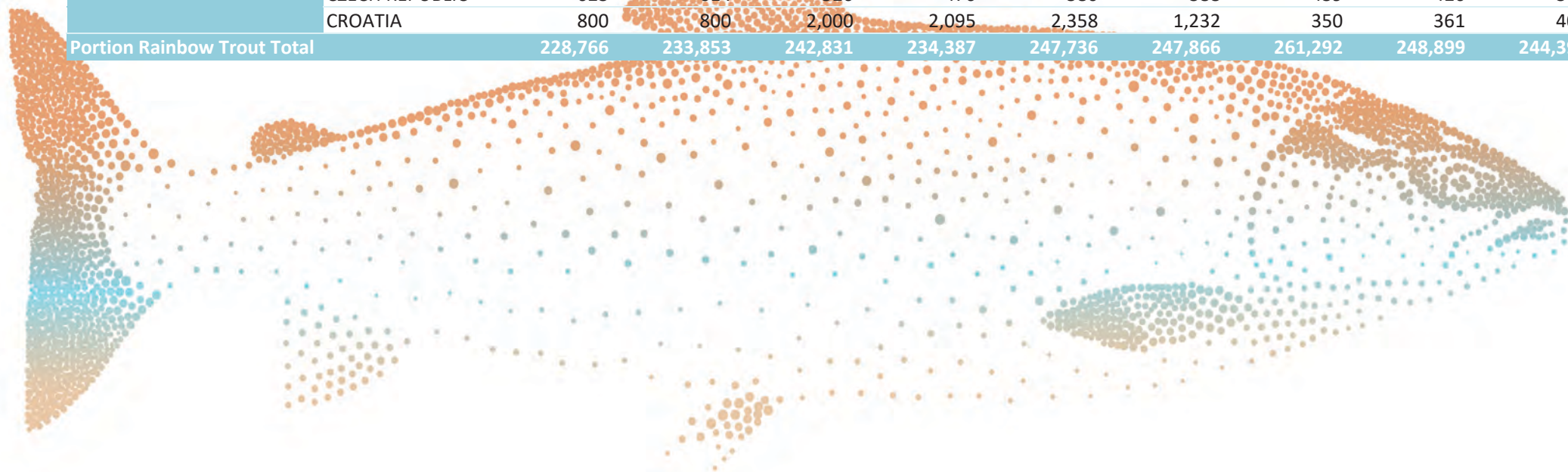
ARCTIC CHAR (*SALVELINUS ALPINUS*), HALIBUT (*HIPPLOGLOSSUS HIPPOGLOSSUS*) & COD (*GADUS MORHUA*)

PRODUCTION (tons)		YEAR									
SPECIES	COUNTRY	2007	2008	2009	2010	2011	2012	2013	2014	2015	
Arctic Char	ICELAND	2,851	3,124	2,405	2,427	3,021	3,089	3,215	3,411	3,937	
	SWEDEN	374	692	600	1,307	1,128	1,849	1,808	1,644	1,644	
	NORWAY	395	468	421	450	450	300	300	300	300	
	AUSTRIA	14	13	43	45	45	120	141	151	151	
Arctic Char Total		3,634	4,297	3,469	4,229	4,644	5,358	5,464	5,506	6,032	
Halibut	NORWAY	2,307	1,587	1,568	1,500	1,600	2,000	1,600	1,600	1,500	
	ICELAND	31	39	49	72	33	13	0	0	0	
Halibut Total		2,338	1,626	1,617	1,572	1,633	2,013	1,600	1,600	1,500	
Cod	NORWAY	11,104	18,052	20,924	25,000	17,000	8,000	3,000	3,000	0	
	ICELAND	1,467	1,502	1,805	1,317	877	893	482	310	74	
Cod Total		12,571	19,554	22,729	26,317	17,877	8,893	3,482	3,310	74	

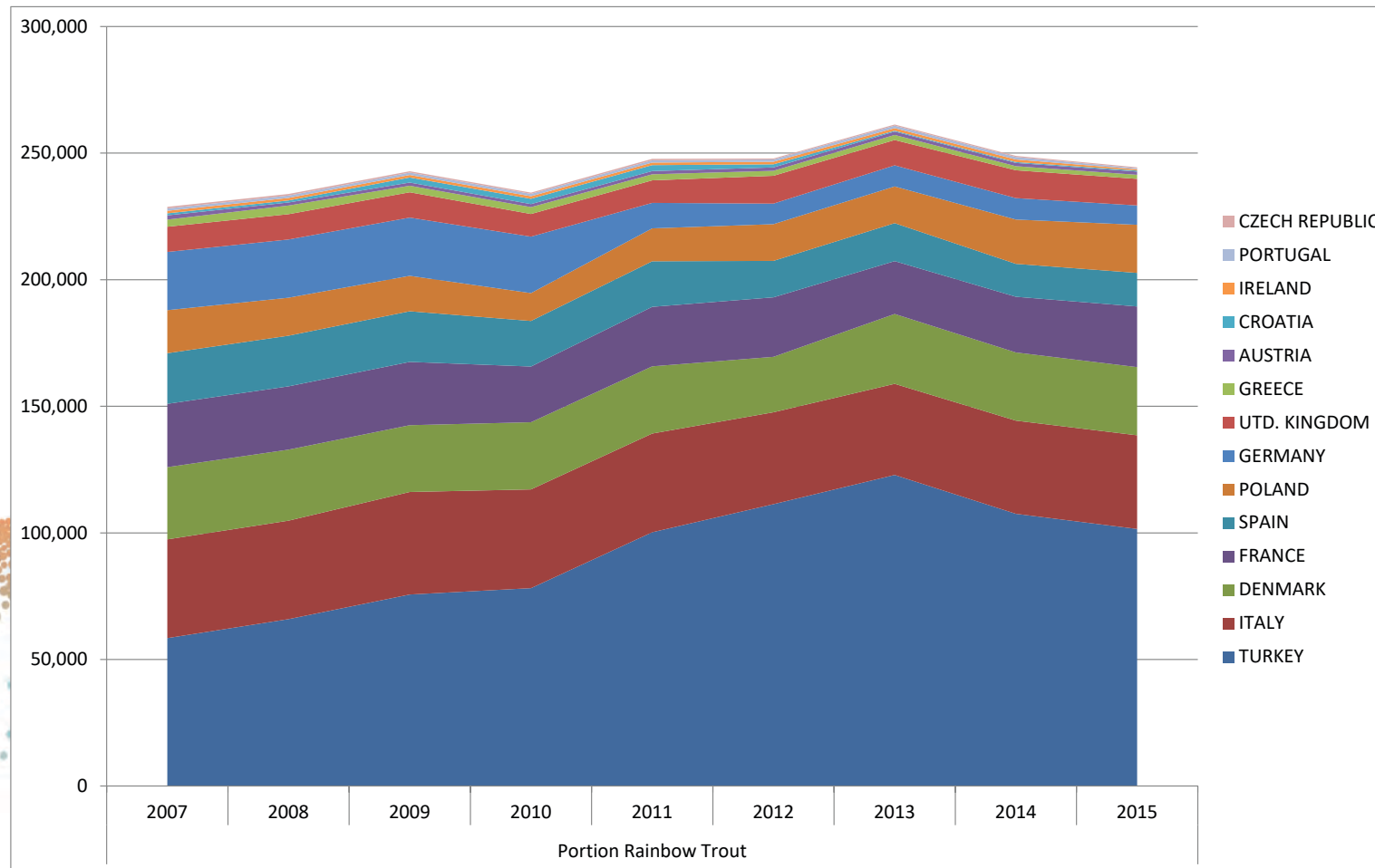


PORTION-SIZE TROUT (ONCORHYNCHUS MYKISS)

PRODUCTION (tons)		YEAR									
SPECIES	COUNTRY	2007	2008	2009	2010	2011	2012	2013	2014	2015	
Portion Rainbow Trout	TURKEY	58,433	65,928	75,657	78,165	100,239	111,335	122,873	107,533	101,550	
	ITALY	39,000	38,900	40,500	39,000	39,000	36,300	36,000	36,800	37,000	
	DENMARK	28,527	28,050	26,374	26,538	26,538	21,895	27,591	26,925	26,925	
	FRANCE	25,000	25,000	25,000	22,000	23,500	23,500	20,870	22,000	23,947	
	POLAND	17,000	15,000	14,000	11,000	13,000	14,500	14,500	17,500	19,000	
	SPAIN	20,000	20,000	20,000	18,000	18,000	14,400	15,000	13,000	13,260	
	UTD. KINGDOM	9,955	10,000	10,000	8,950	8,900	10,996	10,000	11,000	10,500	
	GERMANY	23,000	23,000	23,000	22,300	10,062	8,116	8,333	8,466	7,642	
	GREECE	2,820	3,420	2,588	2,712	2,389	1,967	2,014	1,611	1,611	
	AUSTRIA	1,671	1,200	1,250	1,200	1,270	1,337	1,322	1,277	1,277	
	PORTUGAL	937	941	936	951	900	900	1,000	1,000	410	
	IRELAND	1,000	1,000	1,000	1,000	1,000	1,000	1,000	1,000	500	
	CZECH REPUBLIC	623	614	526	476	580	388	439	426	368	
CROATIA	800	800	2,000	2,095	2,358	1,232	350	361	400		
Portion Rainbow Trout Total		228,766	233,853	242,831	234,387	247,736	247,866	261,292	248,899	244,390	

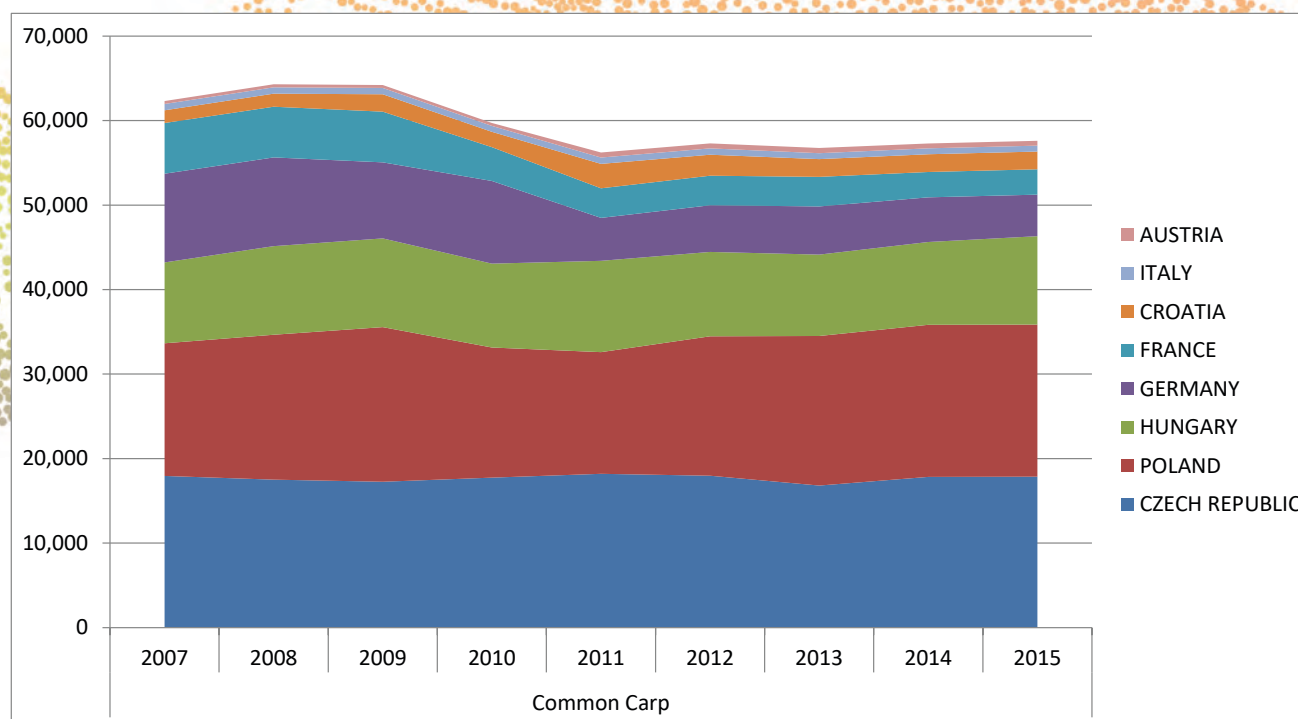


PORTION-SIZE TROUT (ONCORHYNCHUS MYKISS)



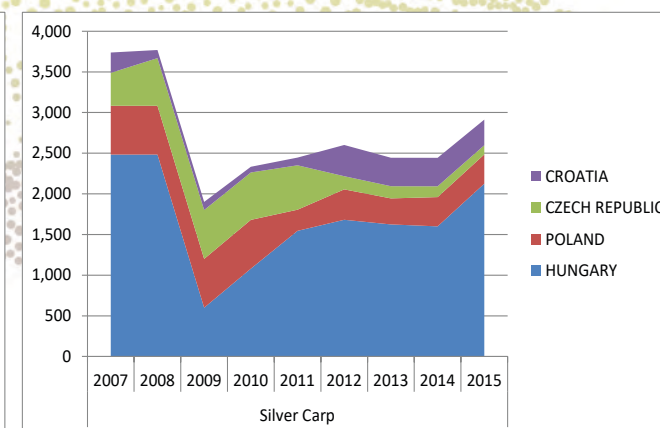
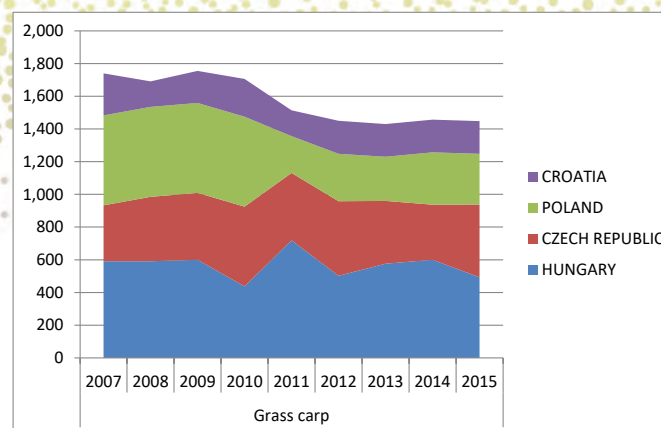
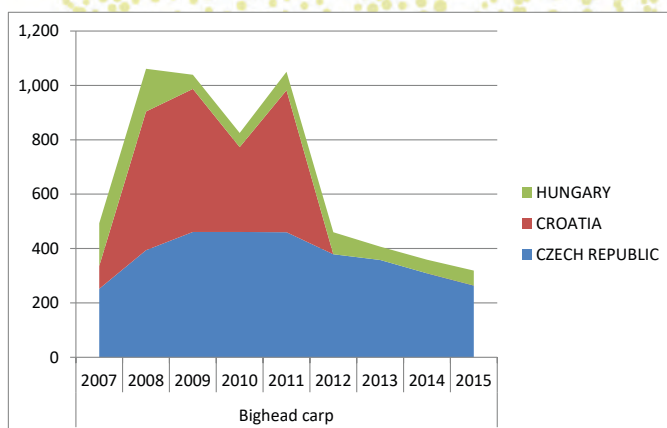
COMMON CARP (CYPRINUS CARPIO)

PRODUCTION (tons)		YEAR								
SPECIES	COUNTRY	2007	2008	2009	2010	2011	2012	2013	2014	2015
Common Carp	POLAND	15,698	17,150	18,300	15,400	14,400	16,500	17,700	18,000	18,000
	CZECH REPUBLIC	17,947	17,507	17,258	17,746	18,198	17,972	16,809	17,833	17,860
	HUNGARY	9,570	10,485	10,500	9,927	10,807	9,985	9,632	9,800	10,461
	GERMANY	10,500	10,500	9,000	9,783	5,082	5,521	5,700	5,285	4,916
	FRANCE	6,000	6,000	6,000	4,000	3,500	3,500	3,500	3,000	3,000
	CROATIA	1,503	1,546	2,058	1,816	2,891	2,484	2,100	2,100	2,100
	ITALY	750	750	750	700	750	750	700	700	700
	AUSTRIA	346	362	344	348	596	590	619	573	573
Common Carp Total		62,314	64,300	64,210	59,720	56,224	57,302	56,760	57,291	57,610



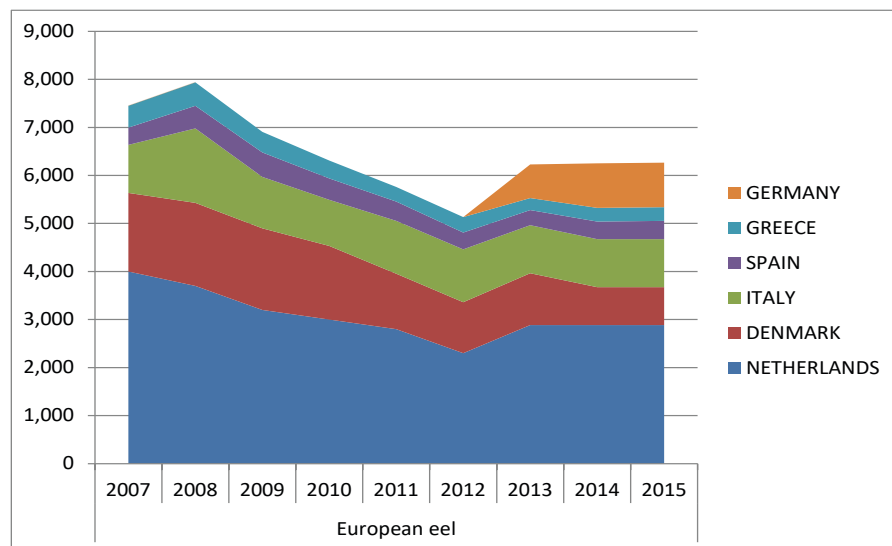
BIGHEAD CARP (*HYPOPHTHALMICHTHYS NOBILIS*), GRASS CARP (*CTENOPHARYNGODON IDELLA*) & SILVER CARP (*HYPOPHTHALMICHTHYS MOLITRIX*)

PRODUCTION (tons)		YEAR									
SPECIES	COUNTRY	2007	2008	2009	2010	2011	2012	2013	2014	2015	
Bighead carp	CROATIA*	84	510	526	312	522	0	0	0	0	
	CZECH REPUBLIC	252	394	461	461	460	379	358	309	264	
	HUNGARY	157	157	52	52	68	81	49	50	55	
Bighead carp Total		493	1,061	1,039	825	1,050	460	407	359	319	
Grass carp	CROATIA*	257	156	196	231	158	202	200	200	200	
	CZECH REPUBLIC	342	394	409	488	412	456	384	337	445	
	HUNGARY	591	591	600	437	719	502	576	600	493	
	POLAND	550	550	550	550	225	290	270	320	310	
Grass carp Total		1,740	1,691	1,755	1,706	1,514	1,450	1,430	1,457	1,448	
Silver Carp	CROATIA*	250	100	100	70	95	384	350	350	315	
	CZECH REPUBLIC	405	586	601	583	546	162	150	133	113	
	HUNGARY	2,483	2,483	600	1,080	1,545	1,681	1,624	1,600	2,125	
	POLAND	600	600	600	600	260	374	320	360	360	
Silver Carp Total		3,738	3,769	1,901	2,333	2,446	2,601	2,444	2,443	2,913	



EUROPEAN EEL (ANGUILLA ANGUILLA)

PRODUCTION (tons)		YEAR								
SPECIES	COUNTRY	2007	2008	2009	2010	2011	2012	2013	2014	2015
European eel	NETHERLANDS	4,000	3,700	3,200	3,000	2,800	2,300	2,885	2,885	2,885
	ITALY	1,000	1,550	1,070	960	1,100	1,100	1,000	1,000	1,000
	GERMANY							700	927	927
	DENMARK	1,636	1,729	1,699	1,532	1,154	1,061	1,079	789	789
	SPAIN	360	470	510	446	402	350	315	366	380
	GREECE	454	489	428	372	304	322	250	285	285
European eel Total		7,450	7,938	6,907	6,310	5,760	5,133	6,229	6,252	6,266

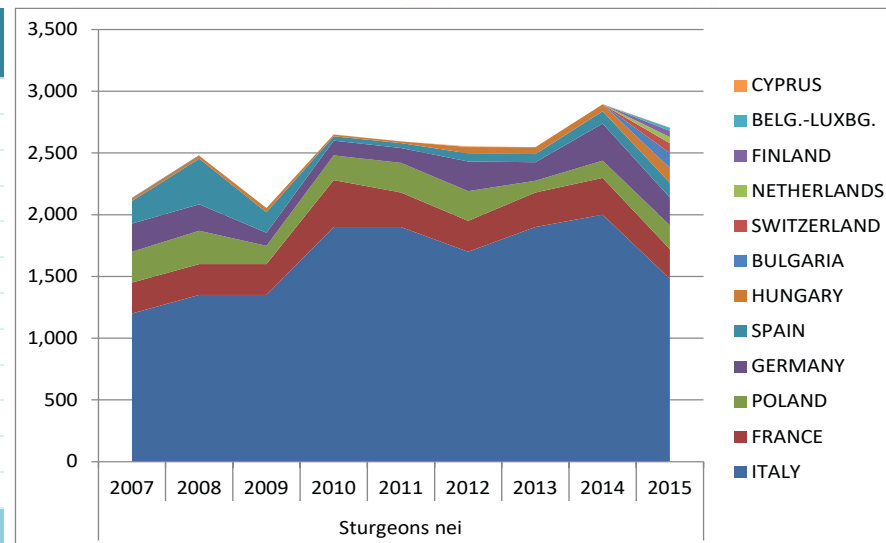


STURGEON SPP. & CAVIAR PRODUCTION

PRODUCTION (tons)		YEAR								
SPECIES	COUNTRY	2007	2008	2009	2010	2011	2012	2013	2014	2015
Sturgeons nei	ITALY	1,200	1,350	1,350	1,900	1,900	1,700	1,900	2,000	1,480
	GERMANY	228	214	106	120	120	240	150	300	225
	FRANCE	250	250	250	380	280	250	280	298	241
	POLAND	250	270	148	200	240	241	95	140	193
	SPAIN	183	370	166	35	40	66	66	100	120
	BULGARIA									120
	SWITZERLAND									80
	FINLAND									50
	NETHERLANDS									50
Sturgeons nei Total		2,111	2,454	2,020	2,635	2,580	2,497	2,491	2,838	2,559

Note: At least 8 different species of sturgeon are reared in Europe.

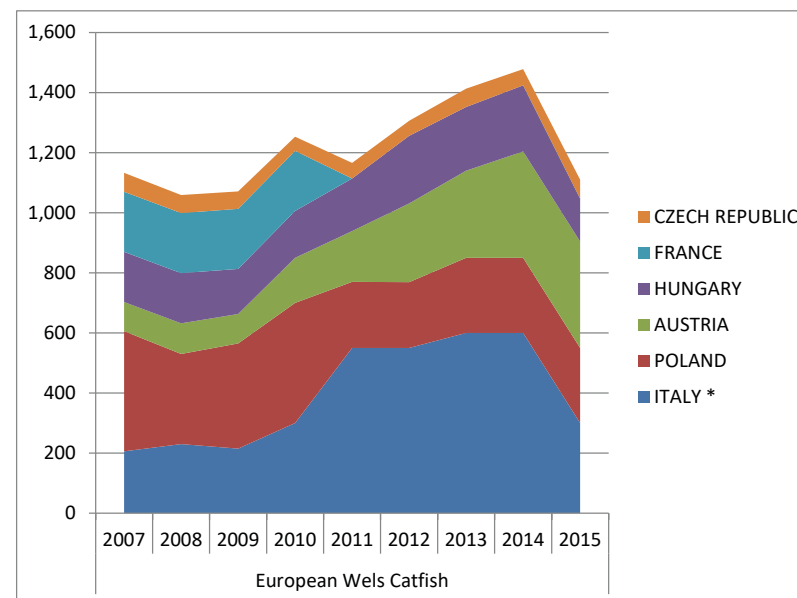
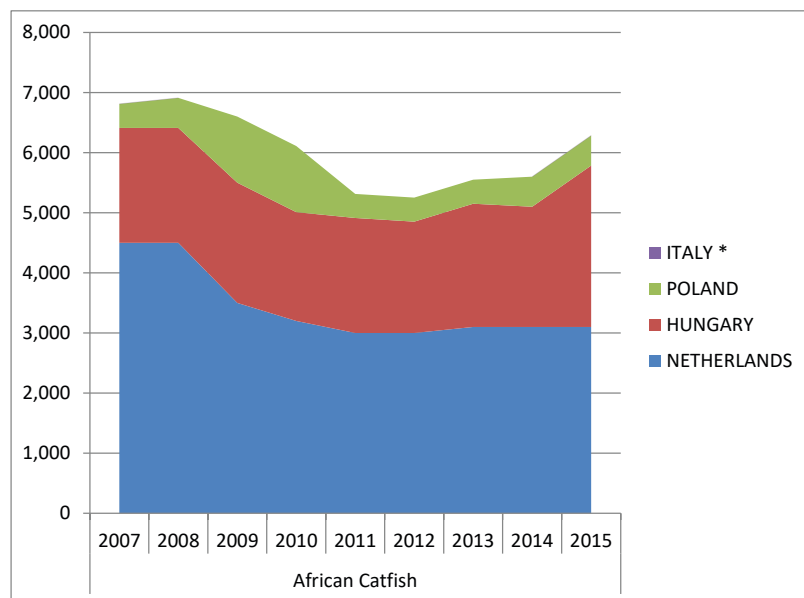
PRODUCTION (tons)		YEAR	
SPECIES	COUNTRY	2015	2016
Caviar - Sturgeon	BELG.-LUXBG.	3	3
	FINLAND	4	4
	FRANCE	23	30
	GERMANY	17	15
	HUNGARY	2	3
	ITALY	35	38
	NETHERLANDS	2	2
	POLAND	10	15
	SPAIN	4	6
	BULGARIA	6	7
	LATVIA	2	3
	SWITZERLAND	1	1
	Caviar - Sturgeon Total		109



Source: Prepared by Dr. Alan Jones for the FEAP Sturgeon Commission

AFRICAN CATFISH (CLARIAS GARIEPINUS) & WELS CATFISH (SILURUS GLANIS)

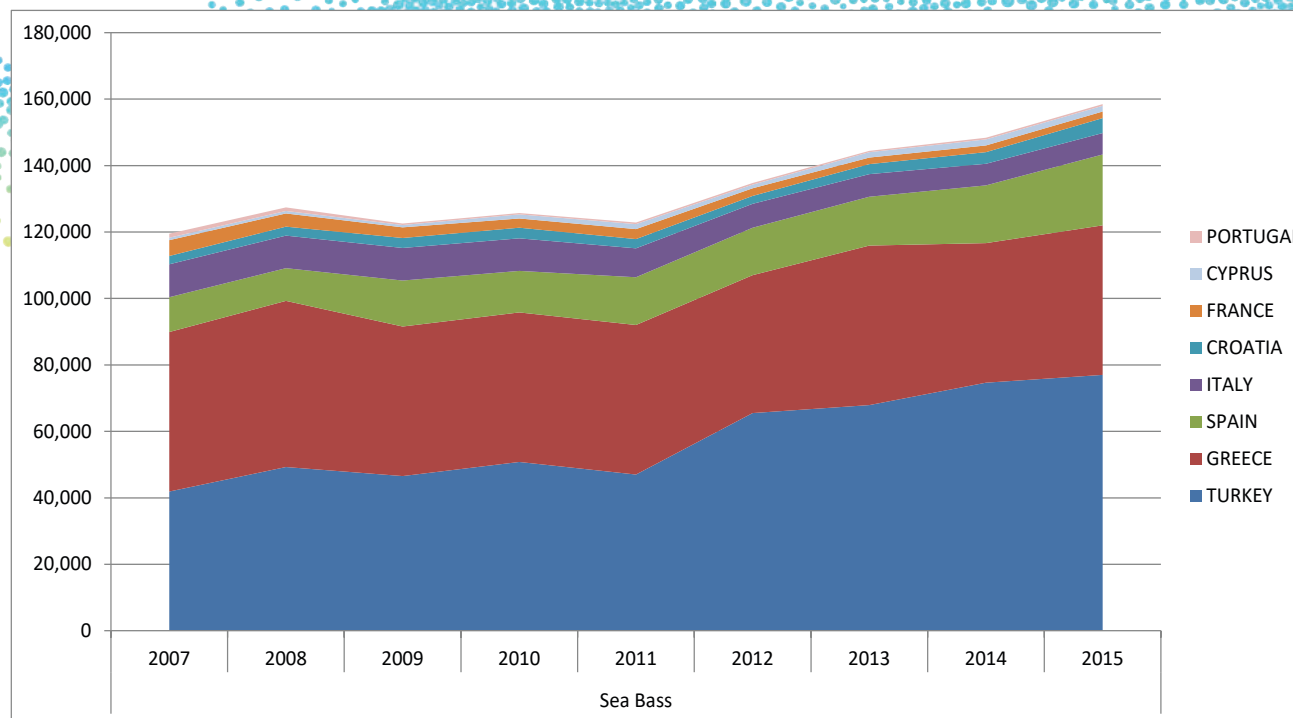
PRODUCTION (tons)		YEAR								
SPECIES	COUNTRY	2007	2008	2009	2010	2011	2012	2013	2014	2015
African Catfish	NETHERLANDS**	4,500	4,500	3,500	3,200	3,000	3,000	3,100	3,100	3,100
	HUNGARY	1,911	1,911	2,000	1,810	1,913	1,852	2,050	2,000	2,685
	POLAND	400	500	1,100	1,100	400	400	400	500	500
	ITALY *	0	0	0	0	0	0	0	0	0
African Catfish Total		6,811	6,911	6,600	6,110	5,313	5,252	5,550	5,600	6,285
European Wels Catfish	ITALY *	206	230	215	300	550	550	600	600	300
	AUSTRIA	97	102	98	150	169	262	290	354	354
	POLAND	400	300	350	400	220	219	250	250	250
	HUNGARY	167	167	150	156	175	225	212	220	143
	CZECH REPUBLIC	63	60	58	47	52	50	61	54	63
European Wels Catfish Total		933	859	871	1,053	1,166	1,306	1,413	1,478	1,110



EUROPEAN SEABASS (DICENTRARCHUS LABRAX)

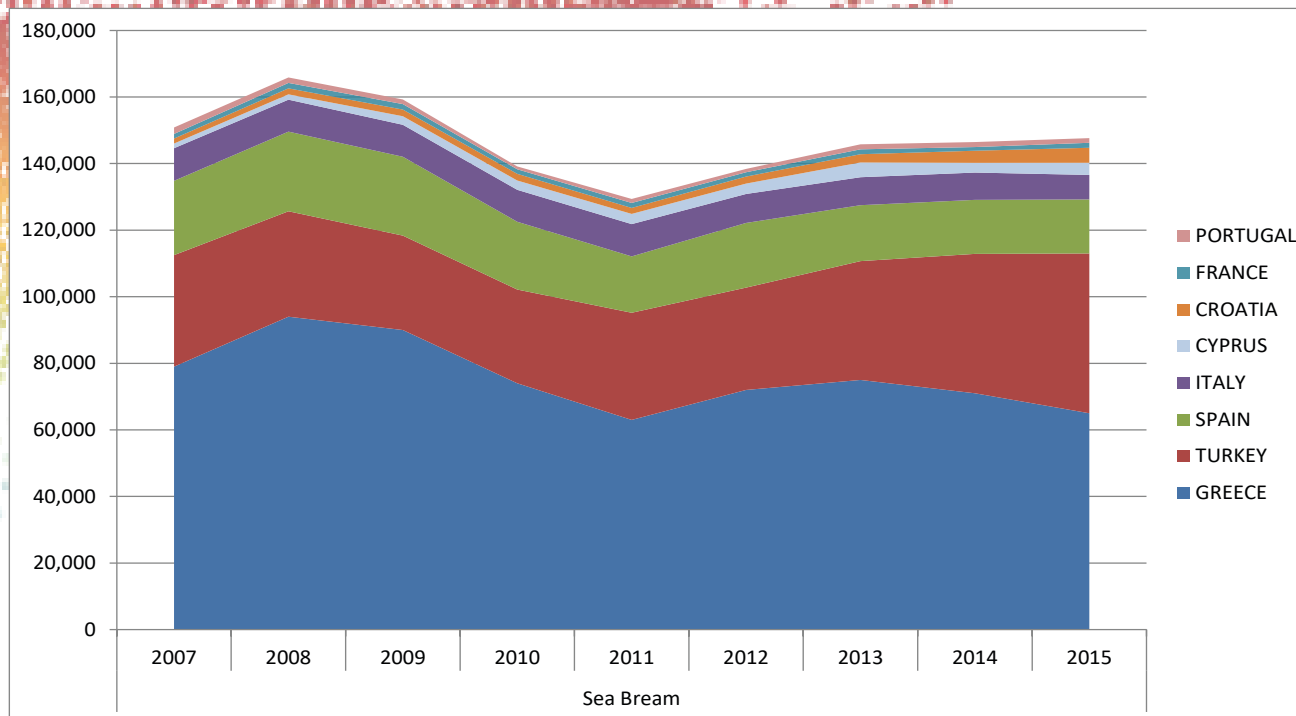


PRODUCTION (tons)		YEAR								
SPECIES	COUNTRY	2007	2008	2009	2010	2011	2012	2013	2014	2015
Sea Bass	TURKEY	41,900	49,270	46,554	50,796	47,013	65,512	67,912	74,653	77,000
	GREECE	48,000	50,000	45,000	45,000	45,000	41,500	48,000	42,000	45,000
	SPAIN	10,480	9,840	13,840	12,495	14,370	14,270	14,700	17,376	21,324
	ITALY	9,900	9,800	9,800	9,800	8,700	7,200	6,800	6,500	6,450
	FRANCE	4,764	3,968	3,204	2,779	3,000	2,300	1,970	2,021	1,980
	CROATIA	2,500	2,700	3,000	3,200	2,785	2,375	3,014	3,500	4,500
	CYPRUS	740	752	703	1,237	1,500	1,096	1,621	1,817	1,725
	PORTUGAL	1,205	1,069	444	396	480	500	400	500	500
Sea Bass Total		119,489	127,399	122,545	125,703	122,848	134,753	144,417	148,367	158,479



GILTHEAD SEABREAM (SPARUS AURATA)

PRODUCTION (tons)		YEAR									
SPECIES	COUNTRY	2007	2008	2009	2010	2011	2012	2013	2014	2015	
Sea Bream	GREECE	79,000	94,000	90,000	74,000	63,000	72,000	75,000	71,000	65,000	
	TURKEY	33,500	31,670	28,362	28,157	32,187	30,743	35,701	41,873	48,000	
	SPAIN	22,320	23,930	23,690	20,360	16,930	19,430	16,800	16,230	16,231	
	ITALY	9,800	9,600	9,600	9,600	9,700	8,700	8,400	8,200	7,360	
	CROATIA	1,500	1,800	2,000	2,000	1,793	2,105	2,466	3,640	4,500	
	CYPRUS	1,404	1,600	2,572	2,799	3,065	3,121	4,444	2,919	3,656	
	PORTUGAL	1,930	1,635	1,383	851	1,200	1,000	1,500	1,500	1,400	
	FRANCE	1,392	1,636	1,648	1,377	1,500	1,300	1,477	1,105	1,502	
Sea Bream Total		150,846	165,871	159,255	139,144	129,375	138,399	145,788	146,467	147,649	



JUVENILE PRODUCTION OF EUROPEAN SEABASS & GILTHEAD SEABREAM

PRODUCTION '000 juveniles		YEAR									
SPECIES	COUNTRY	2007	2008	2009	2010	2011	2012	2013	2014	2015	
Sea Bass	TURKEY	147,000	180,000	117,500	105,000	149,000	205,000	172,000	178,000	220,000	
	GREECE	130,000	195,700	180,000	180,000	174,000	184,000	192,000	175,000	175,000	
	FRANCE	34,420	35,307	39,732	39,800	45,742	46,000	46,542	48,382	55,575	
	SPAIN	29,200	34,000	24,650	28,199	33,150	36,423	31,125	43,328	24,903	
	ITALY	55,000	55,000	55,000	55,000	48,000	40,000	45,000	42,000	27,500	
	CYPRUS	3,117	3,500	3,610	2,522	4,359	5,280	3,955	4,334	6,964	
	CROATIA	11,000	13,000	8,100	9,000	8,600	8,100	5,100	1,000	1,000	
	PORTUGAL	2,371	2,214	2,182	1,290	1,500	0	0	0	0	
Sea Bass Total		412,108	518,721	430,774	420,811	464,351	524,803	495,722	492,044	510,942	
Sea Bream	GREECE	220,000	214,000	150,000	160,000	242,000	245,000	266,000	237,000	245,000	
	TURKEY	103,000	80,000	72,000	85,000	140,000	185,000	138,000	149,000	120,000	
	ITALY	52,000	50,000	48,000	48,000	62,000	70,000	65,000	67,000	60,000	
	SPAIN	67,370	47,282	32,180	36,451	52,900	54,985	51,420	65,786	39,250	
	FRANCE	26,740	31,317	22,300	29,100	41,742	30,400	43,728	47,103	54,510	
	CYPRUS	12,502	13,000	8,589	8,929	18,479	7,976	14,267	23,588	27,927	
	CROATIA	6,000	7,000	6,000	8,929	6,900	5,400	3,400	0	0	
	PORTUGAL	29,722	21,722	3,810	1,378	1,000	0	0	0	0	
Sea Bream Total		517,334	464,321	342,879	377,787	565,021	598,761	581,815	589,477	546,687	
Grand Total		929,442	983,042	773,653	798,598	1,029,372	1,123,564	1,077,537	1,081,521	1,057,629	

TURBOT (*SCOPHTHALMUS MAXIMUS*), SOLE (*SOLEA SOLEA* & *SOLEA SENEGALENSIS*) & MEAGRE (*ARGYROSOMUS REGIUS*)

PRODUCTION (tons)		YEAR									
SPECIES	COUNTRY	2007	2008	2009	2010	2011	2012	2013	2014	2015	
Turbot	CROATIA									8	
	FRANCE	850	850	531	394	300	250	255	279	303	
	ICELAND	70	51	68	46	20	28	58	0	0	
	PORTUGAL	167	351	1,276	2,424	2,500	4,500	700	2,700	3,144	
	SPAIN	6,080	7,870	8,320	6,910	7,760	7,970	6,810	7,808	7,815	
Turbot Total		7,167	9,122	10,195	9,774	10,580	12,748	7,823	10,787	11,270	
Sole	FRANCE	0	0	0	142	200	220	223	261	256	
	ICELAND									290	
	ITALY	0	19	14	14	10	0	0	0		
	PORTUGAL	8	13	14	14	50	100	35	60	175	
	SPAIN	60	55	180	204	110	194	313	786	736	
Sole Total		68	87	208	374	370	514	571	1,107	1,457	
Meagre	CROATIA	0	0	20	20	40	40	32	50	70	
	CYPRUS	0	0	0	12	30	30	48	33	28	
	FRANCE	235	206	121	268	500	420	200	377	226	
	ITALY	335	300	320	320	300	300	190	190	190	
	PORTUGAL	27	15	44	38	0	0	0	0		
	SPAIN	810	1,300	1,660	3,250	2,880	1,640	1,200	1,090	1,642	
	TURKEY*								3,281	2,000	
Meagre Total		1,407	1,821	2,165	3,908	3,750	2,430	1,670	5,021	4,156	

TURBOT (*SCOPHTHALMUS MAXIMUS*), SOLE (*SOLEA SOLEA* & *SOLEA SENEGALENSIS*) & MEAGRE (*ARGYROSOMUS REGIUS*)

